

2022 ECONOMIC REPORT KANSAS CITY REGION



The Kansas City Region is comprised of five counties in the west central part of Missouri. The region is home to several cities including Kansas City and Independence.

The Kansas City Region workforce has almost 591,200 employees, making up 20.2 percent of Missouri's employment. In 2021, 48.1 percent of the workforce was female and 51.9 percent was male. The regional average unemployment rate in 2021 was 5.1 percent.

The workforce is getting older in the Kansas City Region, a trend continuing throughout Missouri and the U.S. In 2021, 22 percent of the workforce in the region was age 55 or older, up from 19 percent a decade earlier.

For the region, 19.9 percent of the workforce was non-white and 7.3 percent was Hispanic or Latino. This compares to the state averages of 17.6 percent non-white and 4.5 percent Hispanic or Latino.

In the Kansas City Region, 8.6 percent of the region's population (ages 18 to 64) speaks a language other than English at home. By comparison, Missouri was at 6.9 percent and the U.S. was at 23.1 percent.

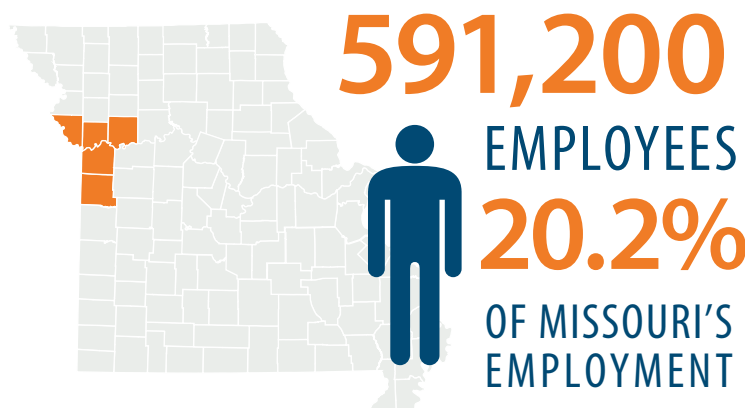
The Kansas City Region has a lower percentage of the population with a disability compared to the state. For the region, 10.7 percent of the population has a disability compared to 12.2 percent in Missouri and 10.3 percent in the U.S.

Workforce Demographics

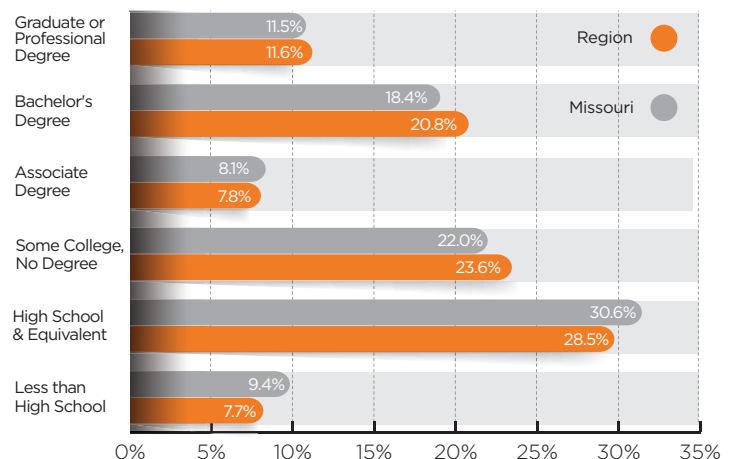
	K.C. Region	Missouri	Nationwide
Average Monthly Employment in 2021	591,260	2,928,368	152,580,667
Average Unemployment Rate in 2021	5.1%	4.4%	5.3%
Male	51.9%	51.0%	50.3%
Female	48.1%	49.0%	49.7%
Non-White	19.9%	17.6%	23.7%
Hispanic or Latino	7.3%	4.5%	16.7%
Ages 55 or Older	22.0%	23.0%	23.0%
With Disabilities (Ages 18-64)	10.7%	12.2%	10.3%
Below Poverty Levels (Ages 18-64)	10.2%	12.6%	12.1%
Language other than English (Ages 18-64)	8.6%	6.9%	23.1%
Education of Associate Degree or Higher	40.2%	38.0%	41.6%

SOURCES: CENSUS ACS 2020-5YR EST.; LEHD 2ND QUARTER; BLS LAUS 2021

Educational attainment rates for the Kansas City Region are slightly higher than the state average for those with bachelor's or advanced degrees. Forty percent of the region's population, age 25 and older, has an associate, bachelor's, or advanced degree compared to 38 percent for the state, and about 42 percent for the nation.



Educational Attainment



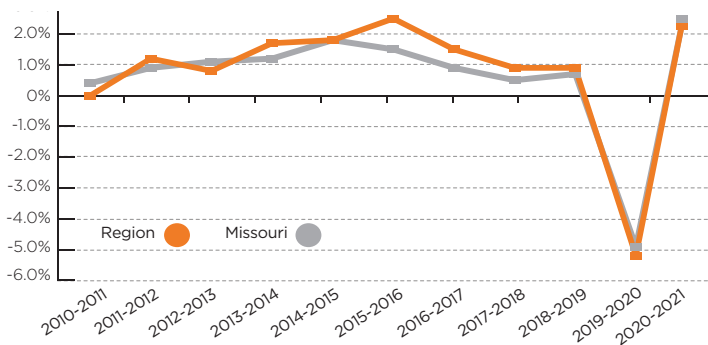
SOURCE: US CENSUS BUREAU, ACS 2020 5-YEAR ESTIMATES

KANSAS CITY REGION

INDUSTRY ANALYSIS

The Kansas City Region averaged over 540,600 jobs in 2021. The region gained 11,349 jobs, an increase of 2.1 percent from 2020 to 2021, whereas the region had lost 29,274 jobs from 2019 to 2020, declining 5.2 percent due to the impact of the COVID-19 pandemic. In 2020, Missouri employment decreased by 4.9 percent, however Missouri employment increased by 2.5 percent in 2021, showing recovery from the pandemic impacts. From 2017 to 2021, the Kansas City Region averaged -0.4 percent compound annual growth for an overall decrease of 1.4 percent. During that same period Missouri's employment also declined by 1.4 percent.

Kansas City Employment Annual Growth Rate



SOURCE: U.S. BUREAU OF LABOR STATISTICS, QCEW

The *Health Care and Social Assistance* industry continues to have the highest employment in the Kansas City region, with more than 82,000 jobs in 2021. *Retail Trade* is the second largest industry, even though it lost over 700 jobs from 2017 to 2021, a decrease of 0.3 percent annually for the region.

Professional, Scientific, and Technical Services grew by 1.5 percent annually, adding over 3,100 jobs from 2017 to 2021. *Accommodation and Food Services* lost over 7,100 jobs, for an annual decline of 3.3 percent from 2017 to 2021. *Accommodation and Food Services* was gaining employment from 2016 to 2019, but lost employment from 2020 to 2021 and was significantly affected by the COVID-19 pandemic.

Kansas City Region Top Employing Industries

Industry	Employment		Net Change	2017-2021 Empl. CAGR	2020 Annual Wages
	2017	2021			
Health Care & Social Assistance	82,191	82,326	135	0.0%	\$57,936
Retail Trade	64,218	63,442	-776	-0.3%	\$33,624
Professional, Science & Tech. Servs.	52,310	55,452	3,142	1.5%	\$94,236
Accommodation & Food Services	56,873	49,764	-7,109	-3.3%	\$21,564
Manufacturing	44,103	44,216	113	0.1%	\$65,844
Educational Services	37,237	36,591	-646	-0.4%	\$46,800
Administrative Support & Waste	35,707	34,769	-938	-0.7%	\$41,052
Construction	29,644	32,573	2,929	2.4%	\$69,708
Finance & Insurance	29,883	29,006	-877	-0.7%	\$99,096
Wholesale Trade	25,213	25,046	-167	-0.2%	\$81,660
Transportation & Warehousing	23,533	24,335	802	0.8%	\$49,188
Other Services (exc. Publ. Adm.)	16,900	15,931	-969	-1.5%	\$44,232

SOURCE: LEHD QWI, 2017-2021 ANNUAL AVERAGES

LOCATION QUOTIENT

To understand the major industries within a region, an analysis of industry concentration or clustering can be useful. The Location Quotient (LQ) describes the concentration of an industry in a geographic region, in relation to the nation, with 1.0 being the national average. Industries with higher than 1.0 LQ indicate a concentration.

The Kansas City Region has higher concentrations in *Transportation Equipment Manufacturing*; *Paper Manufacturing*; *Performing Arts, Spectator Sports, and Related Industries*; and *Data Processing and Hosting and Related Services*.



TRANSPORTATION EQUIPMENT MANUFACTURING

2021 Kansas City Region Location Quotients

Industry	Employment	Location Quotient
Transportation Equipment Manufacturing	10,892	1.8
Paper Manufacturing	2,165	1.7
Performing Arts, Spectator Sports...	2,370	1.6
Data Processing, Hosting, & Related Services	2,264	1.6
Support Activities for Transportation	3,941	1.5
Museums, Historical Sites, & Similar Institutions	763	1.5
Insurance Carriers & Related Activities	12,463	1.4
Professional, Scientific, & Technical Services	49,928	1.4
Computer & Electronic Product Manufacturing	5,248	1.3
Petroleum & Coal Products Manufacturing	509	1.3
Truck Transportation	6,678	1.2
Transit & Ground Passenger Transportation	1,640	1.2
Gasoline Stations	4,067	1.2
Printing & Related Support Activities	1,602	1.2
Bldg. Material & Garden Equip. Dealers	6,081	1.2

SOURCE: U.S. BUREAU OF LABOR STATISTICS, QCEW

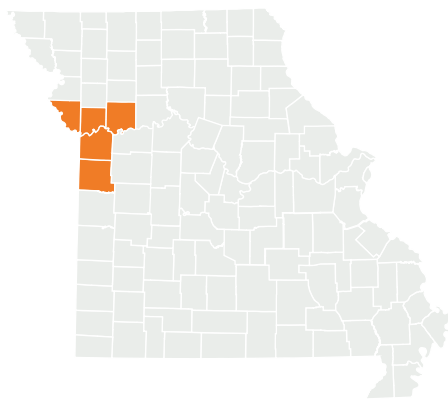
KANSAS CITY REGION

Projected growth in industry helps to identify future employment needs for an area. Projections indicate that the largest industry growth in the Kansas City Region between 2020-2030 will be in *Professional, Scientific, and Technical Services; Hospitals; Warehousing and Storage; Specialty Trade Contractors; and Ambulatory Health Care Services* industries.

Kansas City Region Largest Growth Industries 2020-2030

Industry	Employment		Change 2020-2030	
	2020 Estimated	2030 Projected	Numeric	Percent
Professional, Scientific, & Technical Services	48,628	58,000	9,372	19.3%
Hospitals	30,043	33,144	3,101	10.3%
Warehousing & Storage	4,024	5,920	1,896	47.1%
Specialty Trade Contractors	18,414	20,237	1,823	9.9%
Ambulatory Health Care Services	23,517	25,331	1,814	7.7%
Personal & Laundry Services	4,813	6,136	1,323	27.5%
Perform. Arts, Spectator Sports, & Related Indust.	2,024	3,086	1,062	52.5%
Support Activities for Transportation	3,711	4,739	1,028	27.7%
Real Estate	6,043	6,718	675	11.2%
Motor Vehicle & Parts Dealers	7,973	8,456	483	6.1%

SOURCES: MERIC INDUSTRY PROJECTIONS, 2020-2030



PROJECTED GROWTH BY INDUSTRY HELPS TO IDENTIFY FUTURE EMPLOYMENT NEEDS FOR AN AREA.

OCCUPATIONAL PROJECTIONS

MERIC produces occupational projections that estimate labor demand over a 10-year period. MERIC categorizes these occupations using its Now-Next-Later method to help job seekers understand the training, education, and experience requirements for various occupations.

Now jobs typically require short-term, on-the-job training, little to no experience, and/or a high school diploma. Now occupations with the most projected openings include *Waiters and Waitresses; Fast Food and Counter Workers; and Cashiers. Ushers, Lobby Attendants, and Ticket Takers; Nonfarm Animal Caretakers; and Locker Room, Coatroom, and Dressing Room Attendants* are projected to be the fastest growing Now occupations over the next decade.

Next jobs typically require a non-degree certificate, associate degree, apprenticeship, some experience, or moderate- to long-term training. *Cooks; Assemblers and Fabricators; and Heavy and Tractor-Trailer Truck Drivers* are projected to have the most openings for the Next category of occupations. *Cooks; Fitness Trainers and Aerobics Instructors; and Physical Therapist Assistants* are the fastest growing Next occupations.

Later jobs typically require a bachelor's degree or higher. For Later occupations, *General and Operations Managers; Software Developers and Software Quality Assurance Analysts and Testers; and Registered Nurses* are projected to have the most openings. *Nurse Practitioners; Medical and Health Services Managers; and Coaches and Scouts* are the fastest growing Later occupations.

Kansas City Region Fastest Growing Occupations



NOTE: OCCUPATIONS WITH ANNUAL TOTAL OPENINGS OF LESS THAN 50 ARE OMITTED

SOURCE: MERIC OCCUPATIONAL PROJECTIONS, 2020-2030

★ DENOTES OCCUPATIONS TOP TEN ONLINE JOB ADS FOR 2020-2021 IN THE REGION AND WITHIN THE NOW-NEXT-LATER CLASSIFICATIONS

KANSAS CITY REGION

Kansas City Region Long-Term Occupational Projections by Top Openings

Occupation	2020 Estimated Employment	2030 Projected Employment	Growth Openings	Exits	Transfers	Total Openings	Median Wages
NOW							
Waiters & Waitresses	10,872	13,448	258	893	1,452	2,603	\$20,372
Fast Food & Counter Workers	10,704	12,750	205	1,137	1,240	2,582	\$27,426 ★
Cashiers	15,028	13,787	-124	1,226	1,379	2,481	\$24,233
Home Health & Personal Care Aides	11,206	14,600	339	826	731	1,896	\$23,712 ★
Stockers & Order Fillers	10,976	11,923	95	652	1,117	1,864	\$28,982 ★
NEXT							
Cooks, Restaurant	5,170	7,873	270	384	558	1,212	\$30,564
Miscellaneous Assemblers & Fabricators	9,569	10,372	80	380	712	1,172	\$43,902
Heavy & Tractor-Trailer Truck Drivers	8,045	8,575	53	340	564	957	\$45,674 ★
Nursing Assistants	5,344	5,766	42	356	314	712	\$28,282 ★
First-Line Supv. of Food Prep. & Serving Workers	3,386	4,231	84	170	388	642	\$38,013
LATER							
General & Operations Managers	12,339	13,705	137	260	807	1,204	\$89,476 ★
Software Develop. & Analysts & Testers	8,871	11,169	230	232	491	953	\$93,713 ★
Registered Nurses	13,984	15,173	119	389	367	875	\$70,319 ★
Accountants & Auditors	6,924	7,544	62	202	428	692	\$66,947 ★
Proj. Manag. Specialists & Business Op. Specialists	6,886	7,371	48	165	350	563	\$82,540

SOURCE: MERIC OCCUPATIONAL PROJECTIONS 2020-2030 ★ DENOTES OCCUPATIONS IN THE TOP TEN FOR 2021-2022 ON-LINE JOB ADS IN THE REGION & WITHIN THE NOW-NEXT-LATER CLASSIFICATION

ONLINE JOB POSTINGS

Job postings are an indicator of demand and opportunities in an area, and can assist individuals seeking job opportunities in current in-demand occupations. According to information based on online job posting data collected and aggregated by Lightcast™ for the Kansas City Region, jobs like *Registered Nurses; Sales Representatives; Wholesale and Manufacturing; and Software Developers and Software Quality Assurance Analysts and Testers* had a high number of job postings in the region during the last year.

Kansas City Region Top Five Online Job Postings in Now-Next-Later Classification

Occupation Title	Online Job Postings
NOW	
Retail Salespersons	6,118
Laborers & Freight, Stock, & Material Movers, Hand	5,824
Customer Service Representatives	5,083
First-Line Supervisors of Retail Sales Workers	4,599
Fast Food & Counter Workers	3,995
NEXT	
Sales Representatives, Wholesale & Manufacturing, Except Technical & Scientific Products	7,251
Heavy & Tractor-Trailer Truck Drivers	6,817
Maintenance & Repair Workers, General	3,678
Food Service Managers	3,450
Medical Dosimetrists, Medical Records Specialists, & Health Technologists & Technicians, All Other	2,759
LATER	
Registered Nurses	12,215
Software Developers & Software Quality Assurance Analysts & Testers	6,895
Personal Service Managers, All Other; Entertainment & Recreation Managers, Except Gambling; & Managers, All Other	4,499
Computer Occupations, All Other	3,624
General & Operations Managers	3,034

SOURCE: LIGHTCAST™ (FORMERLY EMSI BURNING GLASS TECHNOLOGIES), ONLINE JOB ADS FROM JUNE 1, 2021 TO MAY 31, 2022

This report was prepared by the staff of the Missouri Economic Research and Information Center (MERIC) as part of the Missouri Workforce Report. All data in this report was current at the time of publication and is subject to revision. Additional details on data sources can be found in the full report. This workforce solution was funded by a grant awarded by the U.S. Department of Labor's Employment and Training Administration. The solution was created by the grantee and does not necessarily reflect the official position of the U.S. Department of Labor. The Department of Labor makes no guarantees, warranties, or assurances of any kind, express or implied, with respect to such information, including any information on linked sites and including, but not limited to, accuracy of the information or its completeness, timeliness, usefulness, adequacy, continued availability, or ownership.