

Southeast MO Hotspot – Caruthersville

Discovering Employment Trends with Local Employment Dynamics (LED)

Caruthersville is an economic and employment center for the Southeast region of Missouri. This report details the workers and industries that make this place a hotspot of economic activity.



Southeast Employment Hotspots

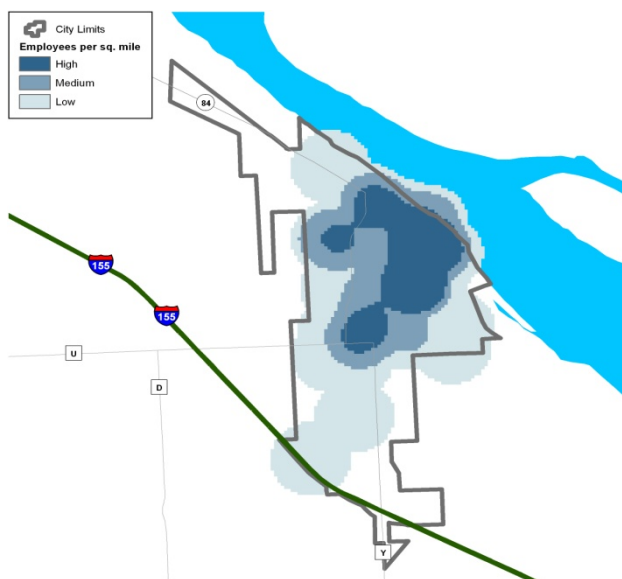
Cape Girardeau, Farmington, Sikeston, and Perryville form the largest concentrations of employment in the Southeast Workforce Investment Area. Workforce Investment Areas are the result of the federal Workforce Investment Act of 1998 (WIA) which funds a number of employment and training programs across the nation.

In 2009, 40% of all workers in the Southeast region were employed in the cities Cape Girardeau (25.5%), Farmington (11.6%), and Sikeston (9.9%) which is up slightly from 2002 when the percentage was at 37%. Other cities in the Southeast WIA with 4,000 or more jobs are Dexter City, Jackson City, and Kennett City.

Southeast WIA Region



Caruthersville Census Overview



Caruthersville's 2009 population estimate from the US Census American Community Survey was 6,020 with a median age of 31.9. This is down from the 2000 Census population of 6,704. Approximately 70% of residents are high school graduates. Health & Social Services and Manufacturing are the top two employing sectors in Caruthersville, together employing approximately 40% of the city's jobs. This is up from 2002 when the sectors employed 32% of the city's jobs.



Where do Caruthersville's Workers Live?

The Local Employment Dynamics (LED) program is a partnership between the U.S. Census Bureau and the agencies in each state that generate and analyze labor market information. The LED Origin-Destination mapping tool allows you to designate either an area where workers work and determine where they live, or designate where residents live and determine where those workers commute.

Top Counties Where Caruthersville Workers Resided in 2002		Top Counties Where Caruthersville Workers Resided in 2009	
Pemiscot County	1,663	Pemiscot County	1,542
Dunklin County	241	Dunklin County	269
New Madrid County	99	New Madrid County	197
Dyer County, TN	90	Dyer County, TN	112
Scott County	52	Scott County	92
Total Caruthersville Jobs	2,381	Total Caruthersville Jobs	2,515

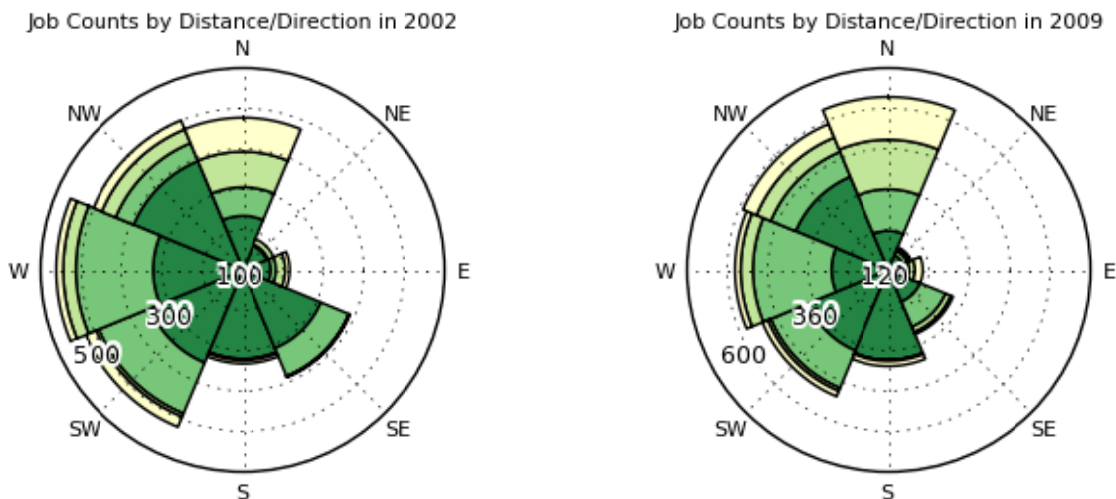
Bootheel Community

Caruthersville, located in Pemiscot County, sits at the far southeast portion of Missouri. Only 90 miles from Memphis, TN, Caruthersville is a small community on the Mississippi River that is also located near the borders between Missouri and several neighboring states. Caruthersville draws 10% of its workforce from Tennessee and also draws workers from Illinois and Arkansas. Healthcare & Social Assistance is the largest employing sector in town making up 22.4% of its 2009 workforce.

LED On-the-Map: Where Caruthersville Workers Live

Caruthersville added jobs over the past several years, with a 6% increase from 2002 through 2009. The majority of Caruthersville's workers continue to come from within Pemiscot County, although that number has dropped by 7% over the same timeframe. Nearly 1,000 of those workers are from the city limits of Caruthersville. More than making up for the loss in workers from Pemiscot County were increases in all surrounding Missouri counties along with Dyer and Butler Counties in Tennessee.

Distance&Direction Caruthersville Workers to Residence (dark green=10 miles or less, yellow=50+ miles)



LED On-the-Map: Caruthersville Area Job Trend 2002-2009



Growing & Shrinking Industries

Health Care & Social Assistance and Manufacturing are the top two employing sectors in Caruthersville, making up about 40% of the entire workforce. Rounding out the top five are retail trade (8.5%), educational services (8.5%), and accommodation & food services (7.2%). Caruthersville's job count grew by 6% from 2002 through 2009. The *Goods Producing* sector lost 3% of its jobs in Caruthersville over this timeframe, while the *Trade, Transport, & Utilities* sector grew by less than 1%. As discussed above, growing workforce from surrounding counties helped offset a loss of Caruthersville's workforce from Pemiscot County.

