

Northeast MO Hotspot - Hannibal

Discovering Employment Trends with Local Employment Dynamics (LED)

Hannibal is an economic and employment center for the Northeast region of Missouri. This report details the workers and industries that make this place a hotspot of economic activity.



Northeast Employment Hotspots

The largest concentrations of employment in the Northeast Workforce Investment Area are found in the cities of Hannibal, Kirksville, Moberly, and Troy. Various localities within St. Charles and St. Louis County are also employment magnets for Northeast region residents.

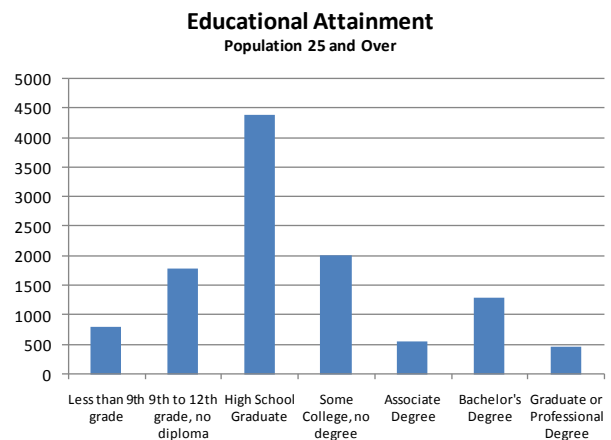
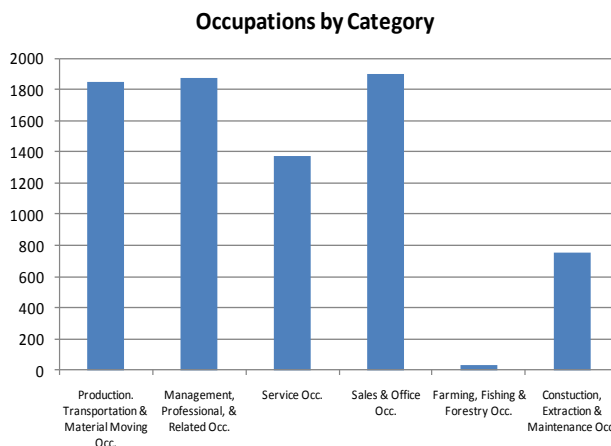
Workforce Investment Areas are the result of the federal Workforce Investment Act of 1998 (WIA) which funds a number of employment and training programs across the nation.

In 2006, nearly 80% of all workers in the Northeast region were employed in the private sector. Thus a little over 20% were employed in the public sector. 26% of the private sector workers were employed in the cities of Hannibal (9%), Kirksville (7%), Moberly (6%), Macon (2%) and Troy (2%). Employment in Marion, Adair and Randolph Counties accounted for over 30% of jobs.



Hannibal Census Overview

In 2000, Hannibal had a population of 17,757 with a median age of 36 years old. Residents were employed evenly across many occupations. 77% had a high school education or higher.

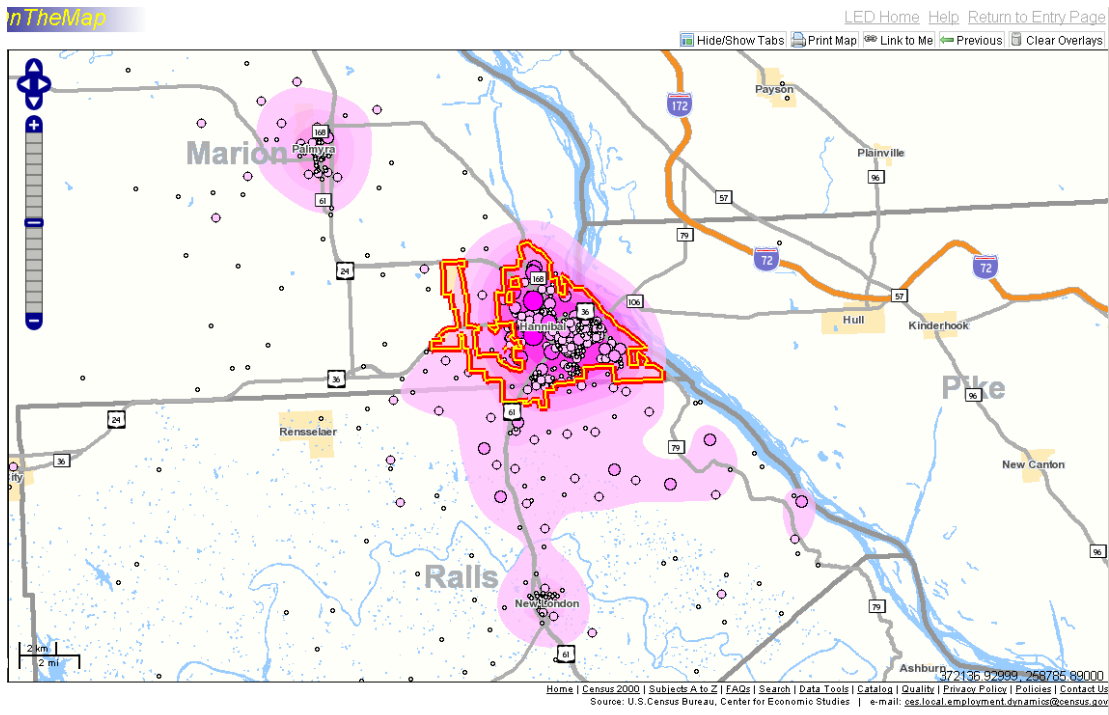


Commuting in and out of Hannibal

Most people employed in Hannibal also live there (44%). The residents of Marion (where Hannibal is located) and Ralls Counties, account for just under 73% of all employees. Almost 6% of Hannibal’s employees live in Adams County, IL, where the city of Quincy is located.

Commuting In to Hannibal			Commuting Out of Hannibal		
Total Primary Jobs in 2006	Count	Share	Total Primary Jobs in 2006	Count	Share
	11,459	100.0%		7,968	100.0%
Job counts in Cities/Towns Where Workers Live in 2006			Job counts in Cities/Towns Where Workers are Employed in 2006		
	Count	Share		Count	Share
Hannibal, Missouri	5,052	44.1%	Hannibal, Missouri	5,052	63.4%
Palmyra, Missouri	454	4.0%	Quincy, Illinois	327	4.1%
Quincy, Illinois	403	3.5%	Monroe City, Missouri	181	2.3%
New London, Missouri	191	1.7%	Palmyra, Missouri	135	1.7%
Center, Missouri	145	1.3%	Jefferson City, Missouri	100	1.3%
All Other Locations	5,214	45.5%	All Other Locations	2,173	27.2%
Job counts in Counties Where Workers Live in 2006			Job counts in Counties Where Workers are Employed in 2006		
	Count	Share		Count	Share
Marion Co., Missouri	6,575	57.4%	Marion Co., Missouri	4,646	58.3%
Ralls Co., Missouri	1,768	15.4%	Ralls Co., Missouri	1,083	13.6%
Adams Co., Illinois	654	5.7%	Adams Co., Illinois	462	5.8%
Pike Co., Missouri	317	2.8%	St. Louis Co., Missouri	299	3.8%
Lewis Co., Missouri	196	1.7%	Pike Co., Missouri	173	2.2%
All Other Locations	1,949	17.1%	All Other Locations	1,305	16.4%
Job counts in States Where Workers Live in 2006			Job counts in States Where Workers are Employed in 2006		
	Count	Share		Count	Share
Missouri	10,541	92.0%	Missouri	7,380	92.6%
Illinois	858	7.5%	Illinois	534	6.7%
Iowa	22	0.2%	Kansas	13	0.2%
All Other Locations	38	0.4%	All Other Locations	41	0.5%
Data Sources			Data Sources		
US Census Bureau, LED Origin-Destination Data Base (2nd Quarter 2002, 2003, 2004, 2005, and 2006)					

LED On-the-Map: Where Hannibal Workers Live

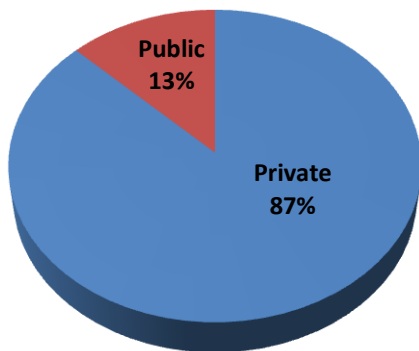


What Industries Employ Hannibal's Workers?

The majority of jobs in Hannibal are in the manufacturing sector, followed closely by health care. Retail trade rounds out the top three industries which together account for 55.8% of employment.

Work Area Profile Report	\$14,400 annual wage or less	\$14,401 to \$40,800 annual wage	More than \$40,800 annual wage	All Workers	
	Count	Count	Count	Count	Share of Total
Total Primary Jobs in 2006	3,538	5,162	2,759	11,459	100.0%
Jobs by Worker Age in 2006	Count	Count	Count	Count	Share
Age 30 or younger	1,684	1,066	299	3,049	26.6%
Age 31 to 54	1,229	3,195	1,975	6,399	55.8%
Age 55 or older	625	901	485	2,011	17.5%
Jobs by Industry Type (2-digit NAICS) in 2006	Count	Count	Count	Count	Share
Agriculture, Forestry, Fishing and Hunting	3	1	3	7	0.1%
Mining, Quarrying, and Oil and Gas Extraction	2	11	17	30	0.3%
Utilities	0	34	51	85	0.7%
Construction	60	309	388	757	6.6%
Manufacturing	182	1,365	955	2,502	21.8%
Wholesale Trade	41	86	61	188	1.6%
Retail Trade	868	611	103	1,582	13.8%
Transportation and Warehousing	42	109	56	207	1.8%
Information	35	78	33	146	1.3%
Finance and Insurance	41	139	49	229	2.0%
Real Estate and Rental and Leasing	20	26	4	50	0.4%
Professional, Scientific, and Technical Services	83	100	64	247	2.2%
Management of Companies and Enterprises	11	25	11	47	0.4%
Administration & Support, Waste Management and Remediation	104	106	54	264	2.3%
Educational Services	225	307	388	920	8.0%
Health Care and Social Assistance	718	1,216	375	2,309	20.2%
Arts, Entertainment, and Recreation	106	50	17	173	1.5%
Accommodation and Food Services	817	200	21	1,038	9.1%
Other Services (excluding Public Administration)	151	94	21	266	2.3%
Public Administration	29	295	88	412	3.6%
Jobs by Earnings Paid in 2006	Count	Share of Total			
\$14,400 annual wage or less	3,538	30.9%			
\$14,401 to \$40,800 annual wage	5,162	45.0%			
More than \$40,800 annual wage	2,759	24.1%			
Data Sources					
US Census Bureau, LED Origin-Destination Data Base (2nd Quarter 2002, 2003, 2004, 2005, and 2006)					

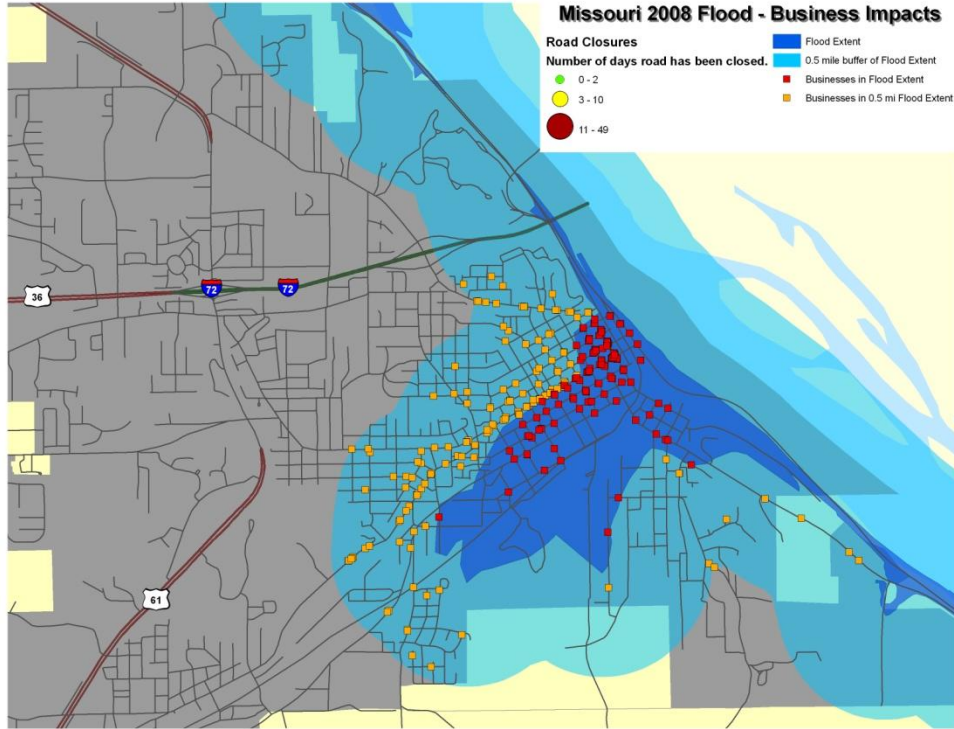
Sector Employment



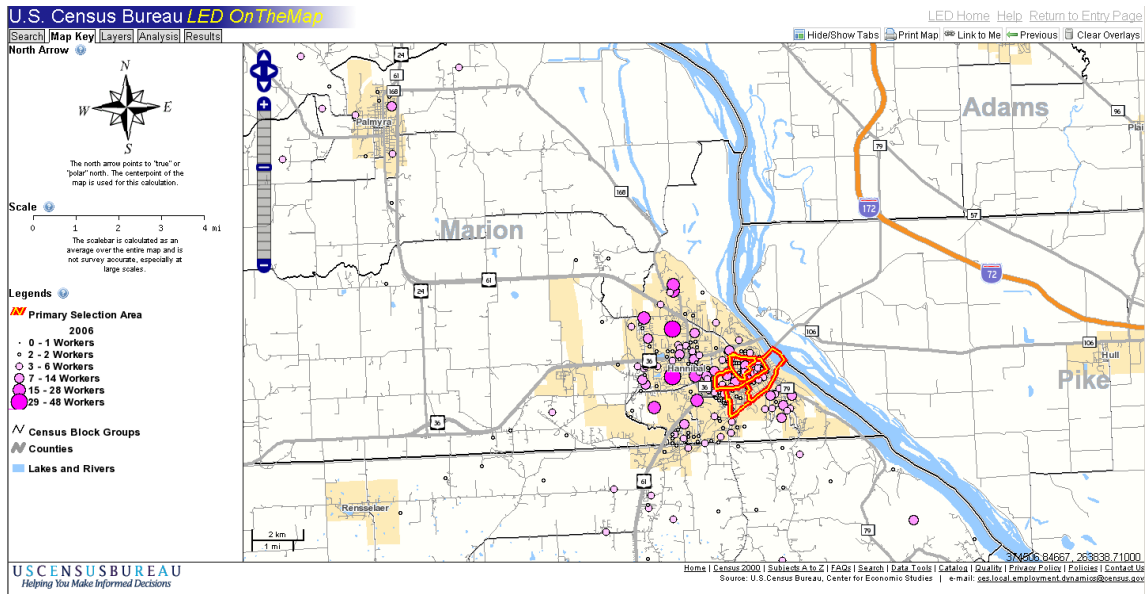
Employment in the private sector is primarily composed of manufacturing (25%), health care (22%) and wholesale and retail trade (18%). Employment in the public sector is primarily composed of educational services (50%) and public administration (28%).



Spring of 2008 Flood Effects on Employment in Hannibal



Where do people who work in the flood affected area live?



Of the 2,085 people who work in the flood affected area of Hannibal, 1,939 live in Missouri and 128 live in Illinois. 1,039 of these workers live in Hannibal, Missouri 71 live in Palmyra, Missouri and 64 live in Quincy, Illinois.

