

East Jackson County Hotspot – Independence

Discovering Employment Trends with Local Employment Dynamics (LED)

Independence is an economic and employment center for the Kansas City region of Missouri. This report details the workers and industries that make this place a hotspot of economic activity.



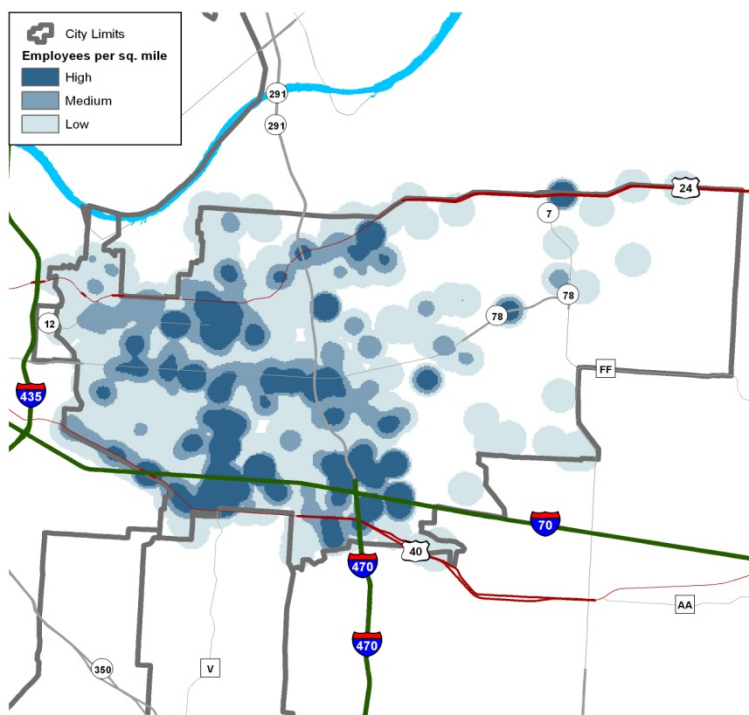
Independence Employment Hotspots

The largest concentrations of employment in the Independence Workforce Investment Area are found in Independence, Lee's Summit, and Blue Springs. Workforce Investment Areas are the result of the federal Workforce Investment Act of 1998 (WIA) which funds a number of employment and training programs across the nation.

In 2009, 75.3% of all workers in the East Jackson County WIA were employed in Independence, Lee's Summit, and Blue Springs. This is up slightly from 2002 when these three cities made up 73% of the region's employment. Other cities in the East Jackson County Region with over 1,900 jobs include Raytown, Grain Valley, and Oak Grove.



Independence Census Overview



Independence's 2009 population was 120,409 according to the US Census American Community Survey. This is up from the 2000 Census population of 113,207. According to the same Census survey, 86.2% of residents have attained high school graduation and 17.9% have at least a bachelors degree. Retail Trade and Healthcare & Social Assistance are the two top employing sectors in Independence, together making up 31.1% of the 2009 workforce. This is down slightly from 2002 when these two sectors made up 31.7% of the total jobs in Independence.



Where Independence Workers Live?

The Local Employment Dynamics (LED) program is a partnership between the U.S. Census Bureau and the agencies in each state that generate and analyze labor market information. The LED Origin-Destination mapping tool allows you to designate either an area where workers work and determine where they live, or designate where residents live and determine where those workers commute.

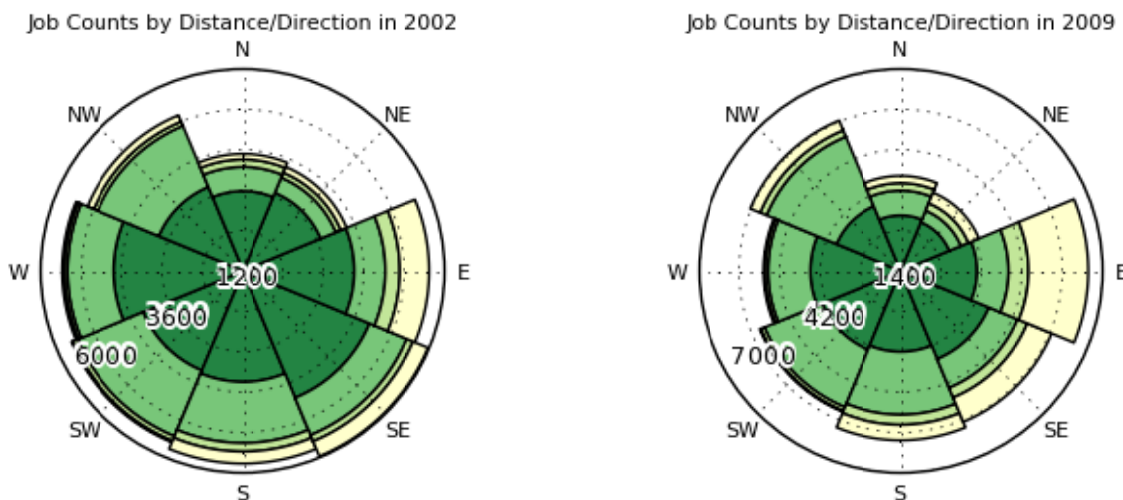
Top Counties Where Independence Workers Resided in 2002		Top Counties Where Independence Workers Resided in 2009	
Jackson County	30,054	Jackson County	25,870
Clay County	2,670	Clay County	3,264
Johnson County, KS	1,170	Cass County	1,457
Cass County	986	Lafayette County	1,087
Platte County	756	Johnson County, KS	1,005
Total Independence Jobs	39,944	Total Independence Jobs	39,962

Independence is located only minutes east of Kansas City, Missouri. Considered a suburb of KC, Independence was home to former President Harry Truman. Independence has many tourist attractions related to its Truman connection. Among these are the Truman Library & Museum, former home, farm, depot, and ticket center. All of the Kansas City amenities add to the attractions considered applicable to Independence as well. Independence is heavily dependent on retail to employ its workforce.

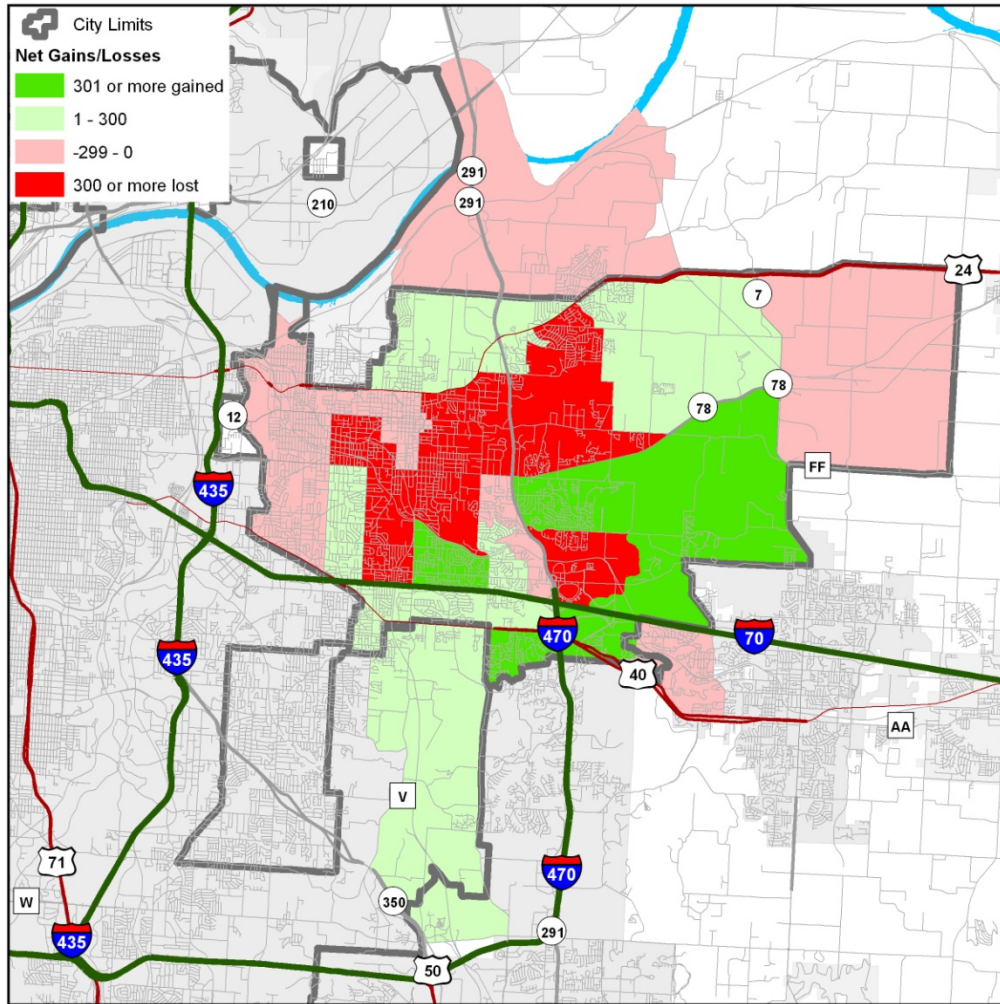
LED On-the-Map: Where Independence Workers Live

Independence's job count stayed nearly identical from 2002 through 2009. Following the same trends as many of Missouri's cities, workers from Jackson County where Independence is located actually declined by 14% during that span as workers continue to travel greater distances to work. The next four surrounding counties all had an increase in residents who travel to Independence for work. There were 7,018 Kansas City residents who worked in Independence in 2009.

Distance&Direction Independence Workers to Residence(dark green=10 miles or less, yellow=50+miles)



LED On-the-Map: Independence Area Job Trend 2002-2009



Growing & Shrinking Industries

Retail Trade is the top employing sector in Independence with a workforce of 6,638. The *Goods Producing* sector lost 3% of its Independence based jobs from 2002 through 2009. While Independence's overall workforce stayed about the same, the *Trade, Transport, & Utilities* sector grew 8% during this span. The workforce continued to spread out in this sector, with nearly every surrounding county increasing the amount of residents working in this sector in Independence.

