

Central Missouri Hotspot – Jefferson City

Discovering Employment Trends with Local Employment Dynamics (LED)

Jefferson City is an economic and employment center for the Central region of Missouri. This report details the workers and industries that make this place a hotspot of economic activity.



Central Employment Hotspots

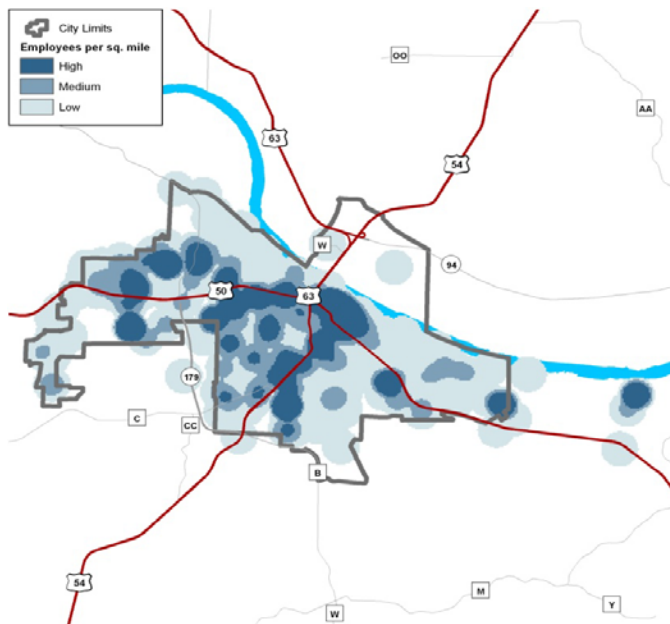
Columbia, Jefferson City, Rolla, and Lebanon form the largest concentrations of employment in the Central Workforce Investment Area (WIA). Workforce Investment Areas are the result of the federal Workforce Investment Act of 1998 (WIA) which funds a number of employment and training programs across the nation.

In 2009 over 55% of all workers in the Central WIA were employed in the cities of Columbia (26.4%), Jefferson City (19.8%), Rolla (4.7%), and Lebanon (4.3%), which is down slightly from 2002 when they made up 56.9%. Other cities in the Central WIA with 6,000 jobs or more are Fulton, Osage Beach, and Mexico.

Central WIA Region



Jefferson City Census Overview



Jefferson City's 2009 population estimate from the US Census American Community Survey was 40,768 with a median age of 36.3. This is up from the 2000 Census population of 39,636. Slightly over a third (33.7 percent) of residents age 25 or older hold at least a bachelors degree. Home to the state capitol, Jefferson City's top employing sector in 2009 was public administration which made up 24.3% of jobs. This is down significantly from 2002 when 43.2% of Jefferson City's jobs were in public administration.



Where do Jefferson City's Workers Live?

The Local Employment Dynamics (LED) program is a partnership between the U.S. Census Bureau and the agencies in each state that generate and analyze labor market information. The LED Origin-Destination mapping tool allows you to designate either an area where workers work and determine where they live, or designate where residents live and determine where those workers commute.

Top Counties Where Jefferson City Workers Resided in 2002		Top Counties Where Jefferson City Workers Resided in 2009	
Cole County	26,258	Cole County	19,627
Boone County	2,931	Callaway County	3,922
Callaway County	2,886	Boone County	3,207
Moniteau County	1,594	Osage County	2,005
Miller County	1,467	Moniteau County	1,662
Total Jefferson City Jobs	48,449	Total Jefferson City Jobs	48,011

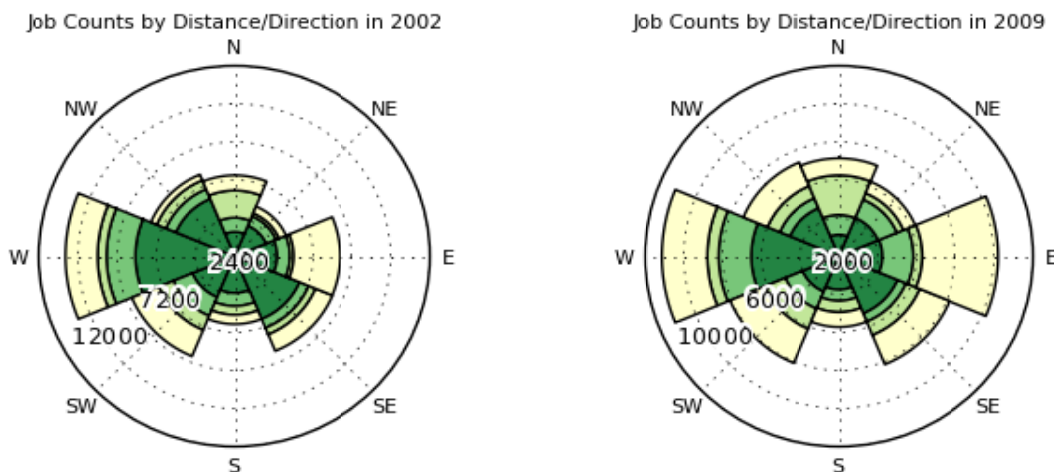
Home of the State Capitol

Despite a significant decline in overall government jobs over the past seven years, the Jefferson City job market is dominated by the presence of the state government. In 2009, 24.3% of the entire Jefferson City workforce was involved in Public Administration. This made up nearly 11,700 total jobs. Because of this huge concentration of jobs, Jefferson City must recruit a majority of its workforce from outside the city. The biggest draw is Columbia, with approximately 2,000 workers traveling to Jefferson City for work each day.

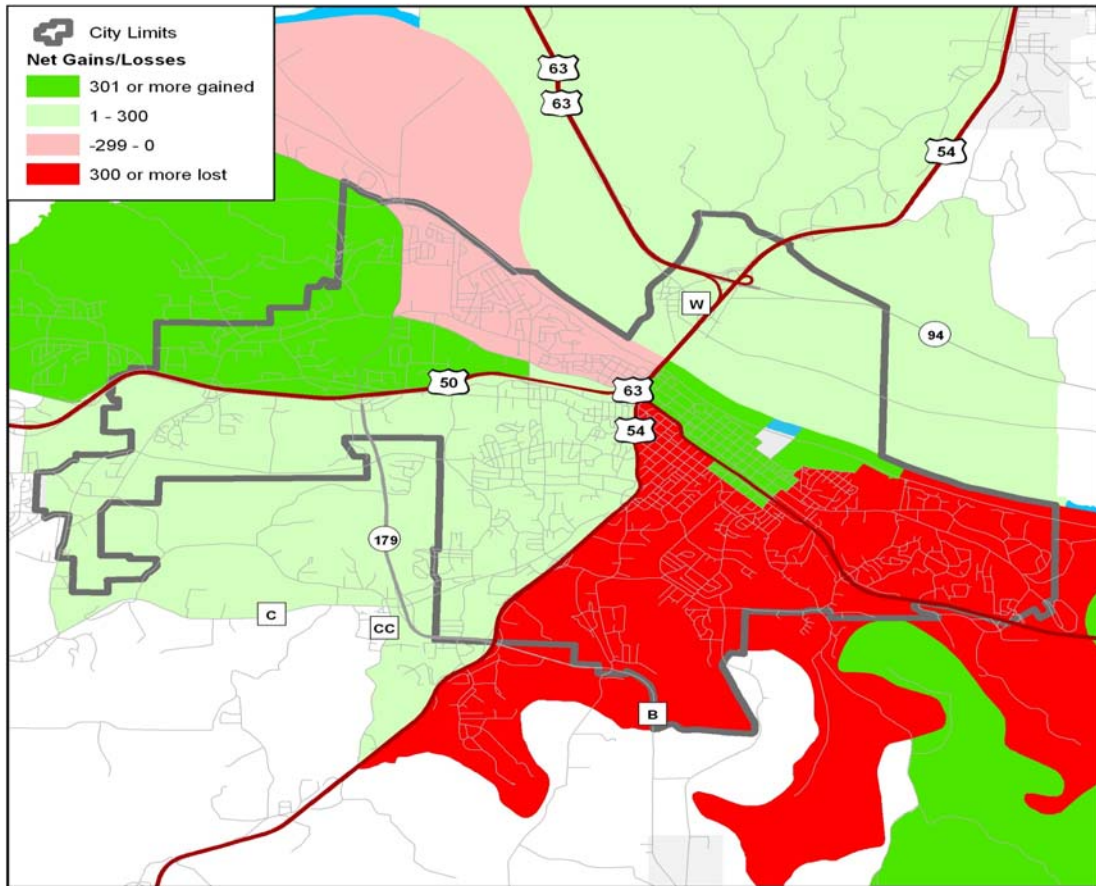
LED On-the-Map: Commuter Distance & Direction

Jefferson City underwent an overall net loss of jobs from 2002 to 2009. The total lost jobs totaled approximately 400 overall, as the Government sector alone lost over 9,000 positions. Over 6,000 fewer workers in Jefferson City are from Cole County. Boone County residents employed in Jefferson City increased 9.4%. Callaway County workers in Jefferson City increased 35.9% over this time as well. St. Louis County residents working in Jefferson City surged by 82.9%. Jackson County, from the Kansas City area, decreased its Jefferson City workforce over this time by 16.8%.

Distance & Direction Jefferson City Workers to Residence (dark green=10 miles or less, yellow=50+ miles)



LED On-the-Map: Jefferson City Area Job Trend 2002-2009



Growing Industries versus Shrinking Industries

Public Administration is the top employing industry in Jefferson City with nearly 12,000 workers. *Health Care & Social Services* is next with just under 8,000 workers. *Goods Producing* jobs stayed generally the similar from 2002 through 2009. There were 24% fewer Cole county residents working in the *Goods Producing* sector while Callaway County and several others increased. The *Trade, Transportation, and Utilities* sector decreased 16% during this span. Cole County residents working in this sector declined 42%. Workers traveling from Columbia to Jefferson City increased 18.3%.

