

# Kansas City MO Hotspot – Kansas City

Discovering Employment Trends with Local Employment Dynamics (LED)

Kansas City is an economic and employment center for the Kansas City region of Missouri. This report details the workers and industries that make this place a hotspot of economic activity.



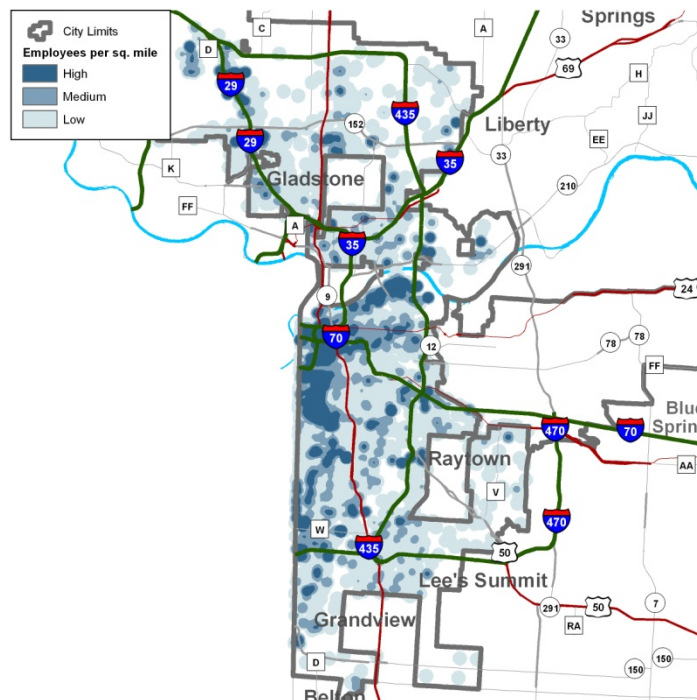
## Kansas City Employment Hotspots

The largest concentrations of employment in the Kansas City Workforce Investment Area are found in Kansas City, Independence, Lee's Summit, and North Kansas City. Workforce Investment Areas are the result of the federal Workforce Investment Act of 1998 (WIA) which funds a number of employment and training programs across the nation.

In 2009, 72.1% of all workers in the Kansas City region were employed in Kansas City. This is down slightly from 2002 when Kansas City made up 73.9% of its region. Other cities in the Kansas City Region with over 7,000 jobs include North Kansas City (6.0%), Liberty (3.9%), and Gladstone (2.1%).



## Kansas City Census Overview



Kansas City's 2009 population was 474,396 according to the US Census American Community Survey. This is up from the 2000 Census population of 441,269. According to the same Census survey, 85.9% of residents have attained high school graduation and 29.8% have at least a bachelors degree. Healthcare & Social Assistance and Professional, Scientific, & Technical Services are the two top employing sectors in Kansas City, together making up 23.1% of the 2009 workforce. This is up from 2002 when these two sectors made up 21.9% of the total jobs in Kansas City.



## Where Kansas City Workers Live?

The Local Employment Dynamics (LED) program is a partnership between the U.S. Census Bureau and the agencies in each state that generate and analyze labor market information. The LED Origin-Destination mapping tool allows you to designate either an area where workers work and determine where they live, or designate where residents live and determine where those workers commute.

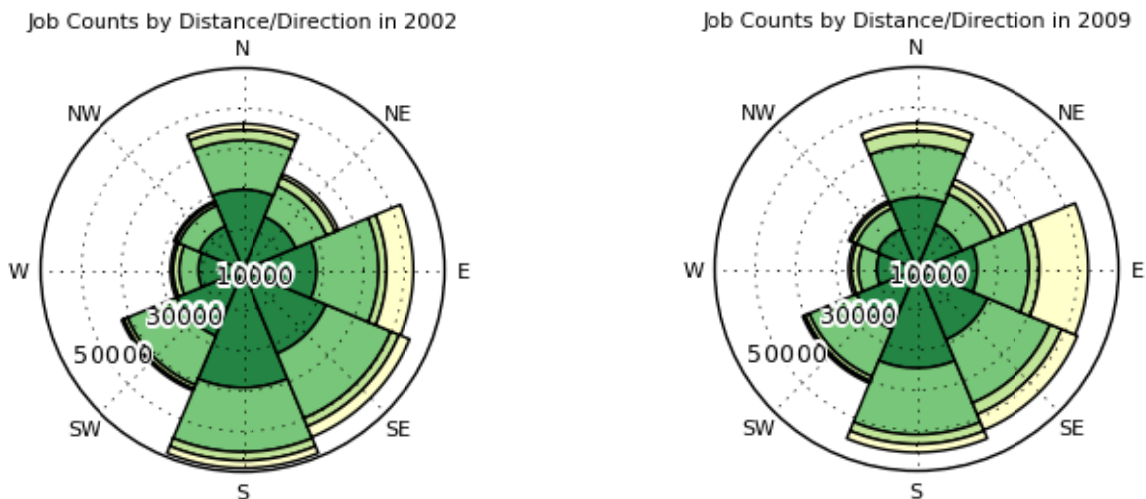
| Top Counties Where Kansas City Workers Resided in 2002 |                | Top Counties Where Kansas City Workers Resided in 2009 |                |
|--|----------------|--|----------------|
| Jackson County   | 130,127        | Jackson County   | 108,680        |
| Clay County  | 38,221         | Clay County  | 40,124         |
| Johnson County, Kansas                                 | 37,757         | Johnson County, Kansas                                 | 36,158         |
| Platte County  | 17,209         | Platte County  | 17,128         |
| Cass County  | 8,763          | Cass County  | 9,463          |
| <b>Total Kansas City Jobs</b>                          | <b>266,935</b> | <b>Total Kansas City Jobs</b>                          | <b>257,255</b> |

Kansas City is Missouri's second largest metropolitan area with just over two million residents. The Kansas City area, which extends across the state line into Kansas, is a major economic hotspot and is home to professional sports teams, Fortune 500 companies, colleges and universities, and many other urban attractions. KCI (Kansas City International Airport) is also in the top 35 busiest airports in America. Kansas City attracts significant tourism through other attractions such as its multiple conventions and concert venues, the Kansas Speedway, the city's renowned barbeque reputation, and Worlds of Fun amusement Park.

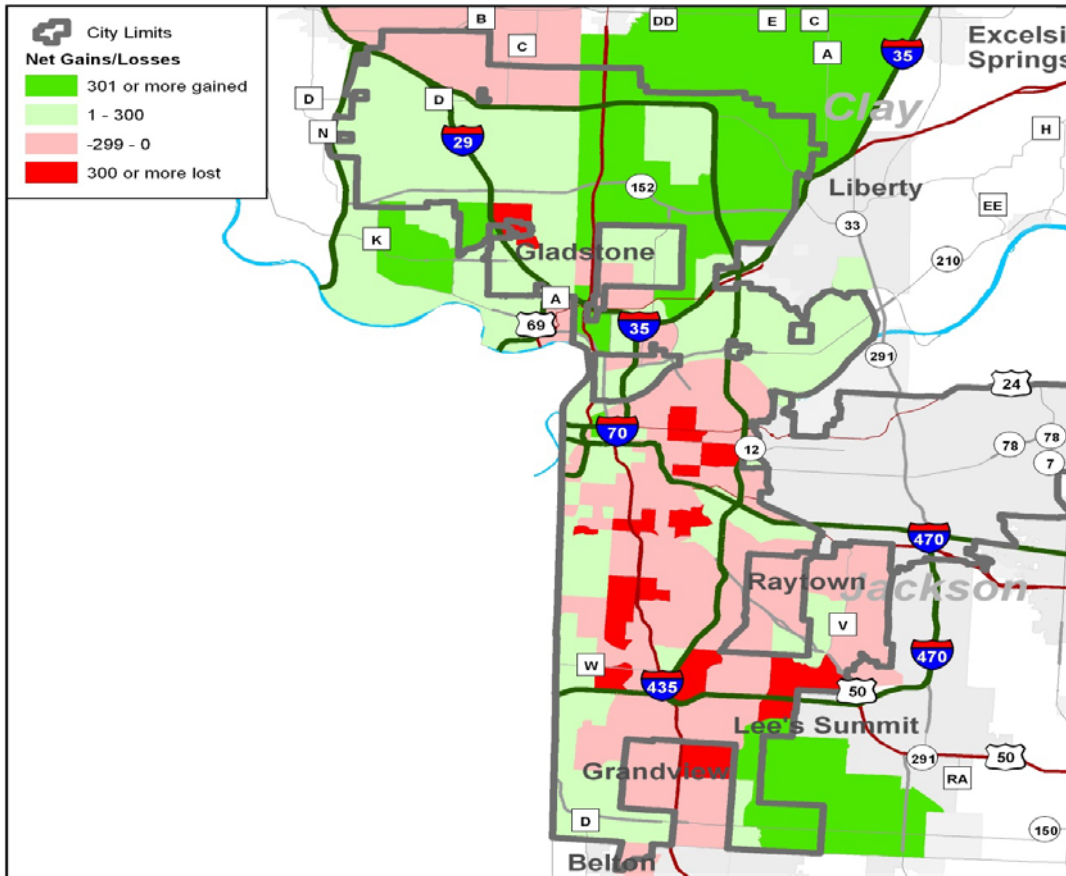
## LED On-the-Map: Where Kansas City Workers Live

Kansas City's job count grew by about 4% between 2002 and 2009. Following the same trends as many of Missouri's cities where the workforce is residing further from their employer, workers in Jackson County where Kansas City is located actually declined by 16% during that span. Clay County, MO increased its KC workforce by 5%. Kansas City, MO residents in 2009 made up 37.4% of the KC workforce, down from 41.3% in 2002.

**Distance and Direction Kansas City Workers to Residence**(dark green=10 miles or less, yellow=50+miles)



## LED On-the-Map: Kansas City Area Job Trends 2002-2009



### Growing & Shrinking Industries

Kansas City's workforce declined 3.7% from 2002 to 2009. Healthcare & Social Assistance is Kansas City's top employing sector with over 35,000 workers followed by Professional, Scientific & Technical Services and Retail Trade. The *Goods Producing* sector lost 16% of its jobs during this time. Outside of Jackson County, most surrounding counties had an increase in residents who work in the Kansas City *Goods Producing* sector. The *Trade, Transport, & Utilities* sector lost 6% of its jobs during this span. Residents of most counties working in this sector declined except for Cass County, which increased nearly 12%

