

# Southeast MO Hotspot – Sikeston

Discovering Employment Trends with Local Employment Dynamics (LED)

Sikeston an economic and employment center for the Southeast region of Missouri. This report details the workers and industries that make this place a hotspot of economic activity.



## Southeast Employment Hotspots

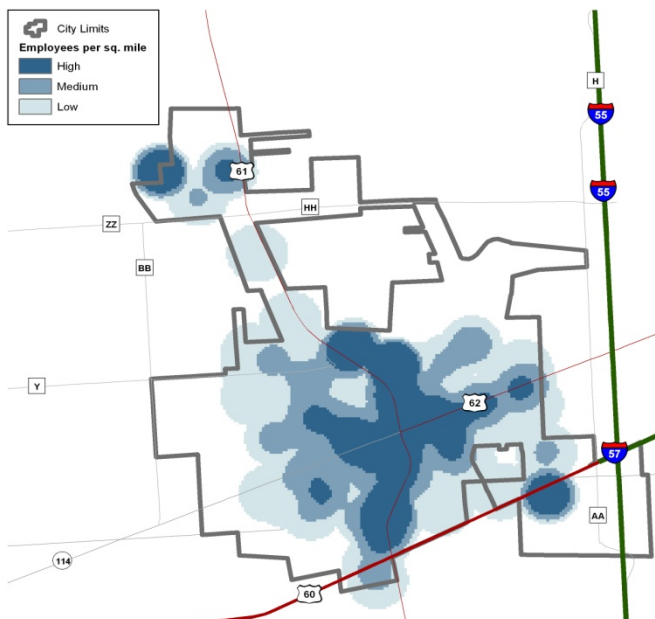
Cape Girardeau, Farmington Sikeston, and Perryville form the largest concentrations of employment in the Southeast Workforce Investment Area. Workforce Investment Areas are the result of the federal Workforce Investment Act of 1998 (WIA) which funds a number of employment and training programs across the nation.

In 2009, 40% of all workers in the Southeast region were employed in the cities Cape Girardeau (25.5%), Farmington (11.6%), and Sikeston (9.9%) which is up slightly from 2002 when the percentage was at 37%. Other cities in the Southeast WIA with 4,000 or more jobs are Dexter City, Jackson City, and Kennett City.

Southeast WIA Region



## Sikeston Census Overview



Sikeston's 2009 population estimate from the US Census American Community Survey was 17,338 with a median age of 39.2. This is up from the 2000 Census population of 17,015. Approximately 72.4 % of residents are high school graduates. Health & Social Assistance and Retail Trade are the top two employing sectors in Sikeston, together employing approximately 37.4% of the city's jobs. This is up from 2002 when the sector employed 33.4% of the city's jobs.



## Where do Sikeston's Workers Live?

The Local Employment Dynamics (LED) program is a partnership between the U.S. Census Bureau and the agencies in each state that generate and analyze labor market information. The LED Origin-Destination mapping tool allows you to designate either an area where workers work and determine where they live, or designate where residents live and determine where those workers commute.

Top Counties Where Sikeston Workers Resided in 2002		Top Counties Where Sikeston Workers Resided in 2009	
Scott County	5,253	Scott County	5,086
Mississippi County	712	New Madrid County	1,190
Stoddard County	678	Stoddard County	785
New Madrid County	638	Mississippi County	780
Cape Girardeau County	562	Cape Girardeau County	773
<b>Total Sikeston Jobs</b>	<b>8,784</b>	<b>Total Sikeston Jobs</b>	<b>10,806</b>

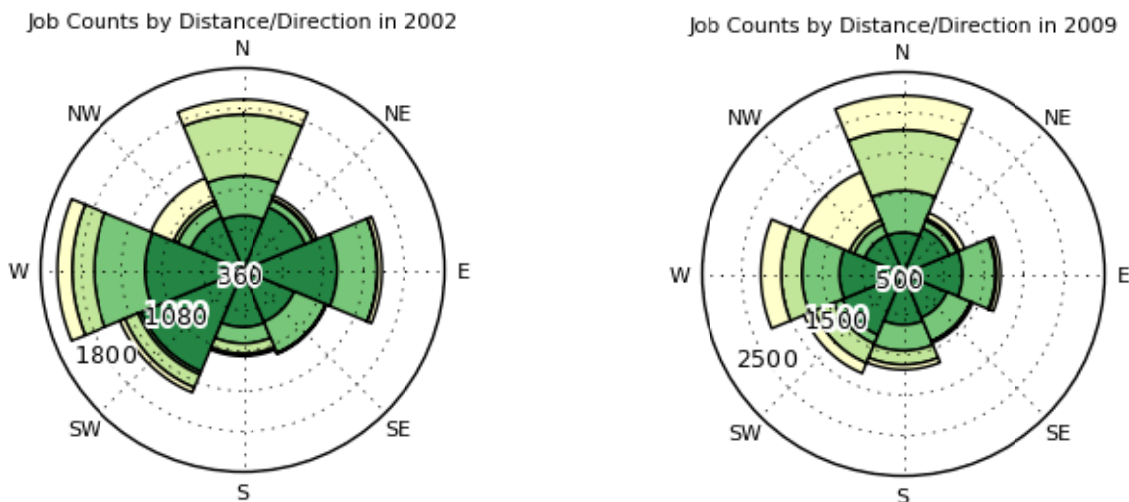
### Interstates 55 & 57 Junction

Sikeston, located at the convergence of Scott and New Madrid Counties, sits in southeast Missouri at the junction of Interstates 55 & 57. I-55 runs north into St. Louis while I-57 runs northeast all the way to Chicago. Sikeston draws the majority of its workforce from Scott County and New Madrid County, although each has trended in an opposite way. Healthcare & Social Assistance is the largest employing sector in town making up 22.1% of its 2009 workforce.

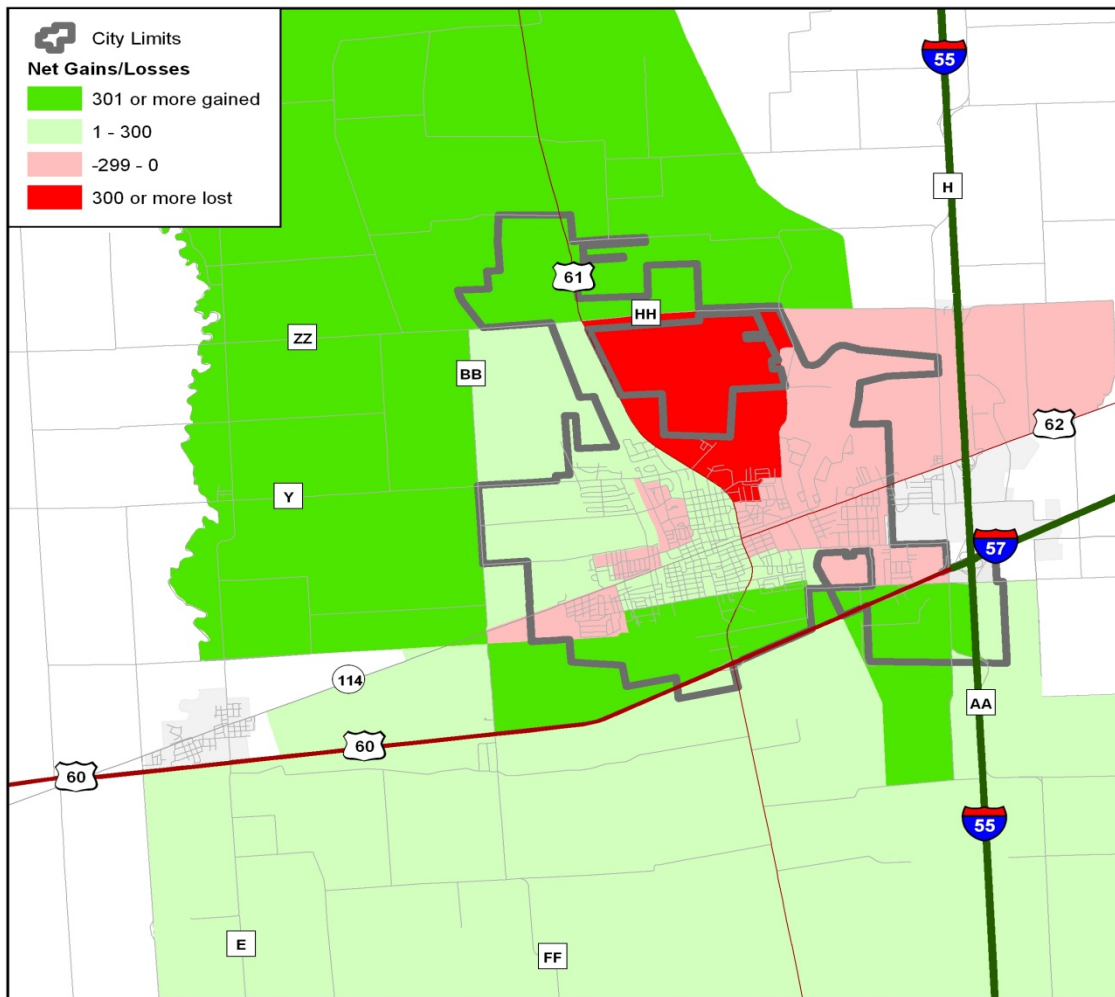
## LED On-the-Map: Where Sikeston Workers Live

Sikeston's jobs grew 23% from 2002 through 2009. The majority of Sikeston workers currently come from Scott County, although that number has declined by less than 1% from 2002 to 2009. However, over that same time period workers from New Madrid County have grown by 46%. Nearly all of the other nearby counties have also increased their workforce to Sikeston over the same timeframe as well, typically an increase of anywhere from 80 to 150 workers per county.

**Distance and Direction Sikeston Workers to Residence** (dark green=10 miles or less, yellow=50+ miles)



# LED On-the-Map: Sikeston Area Job Trends 2002-2009



## Growing & Shrinking Industries

Healthcare & Social Assistance is the top employing sector in Caruthersville with 22.1% of the workforce. Rounding out the top six are retail trade (15.4%), manufacturing (11.8%), accommodation & food services (7.4%), Educational Services (7.4%), and Transportation & Warehousing (4.9%). Sikeston experienced overall job growth of 23% from 2002 through 2009. The *Goods Producing* sector increased 18%, with over 100 jobs alone attracting New Madrid County residents. The *Trade, Transport, & Utilities* sector grew 75% during this span, with Cape Girardeau, St. Louis, and New Madrid Counties each providing Sikeston with over 100 additional workers each.

