

Ozark MO Hotspot - Springfield

Discovering Employment Trends with Local Employment Dynamics (LED)

Springfield is an economic and employment center for the Ozark region of Missouri. This report details the workers and industries that make this place a hotspot of economic activity.



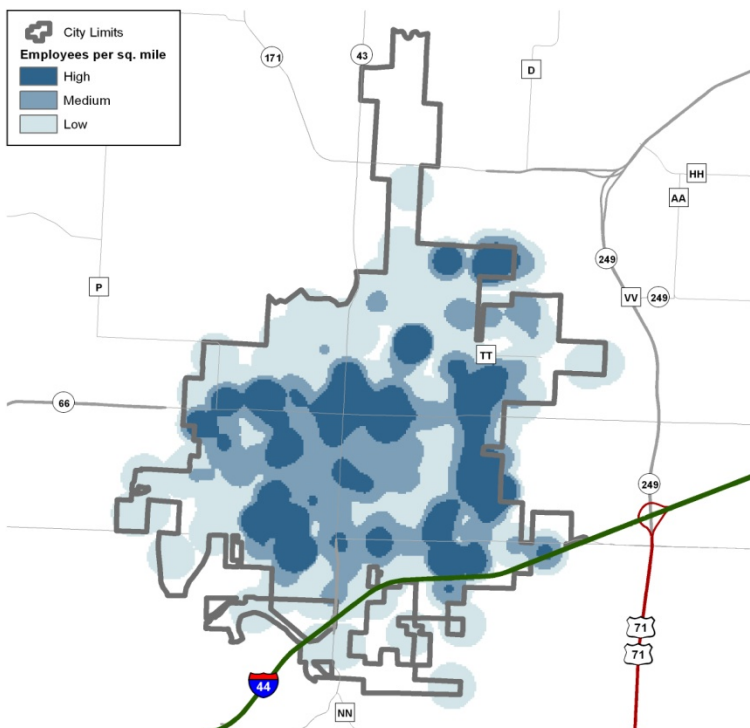
Ozark Employment Hotspots

The greater Springfield area, Branson, Nixa, Bolivar, Republic and Ozark form the largest concentrations of employment in the Ozark Workforce Investment Area. Workforce Investment Areas are the result of the federal Workforce Investment Act of 1998 (WIA) which funds a number of employment and training programs across the nation.

In 2009, 78% of all workers in the Ozark WIA were employed in Springfield (63.1%), Branson (7.7%), Bolivar (2.8%), Ozark (2.7%), and Nixa (1.5%). This is down slightly from 2002 when these same five cities made up 80% of the workforce. Other cities in the Ozark WIA with over 2,000 jobs include Marshfield and Republic.



Ozark Census Overview



Springfield's 2009 population estimate from the US Census American Community Survey was 154,993 with a median age of 32.5. This is up from the 2000 Census population of 139,600. According to the same Census survey, 89.5% of residents have attained high school graduation and 24.5% have at least a bachelors degree. Healthcare & Social Assistance and Retail Trade are the two top employing sectors in Springfield, making up 32.5% of the 2009 workforce. This is down from 2002 when these two sectors made up 31.6% of the total jobs in Springfield.



Where Springfield Workers Live?

The Local Employment Dynamics (LED) program is a partnership between the U.S. Census Bureau and the agencies in each state that generate and analyze labor market information. The LED Origin-Destination mapping tool allows you to designate either an area where workers work and determine where they live, or designate where residents live and determine where those workers commute.

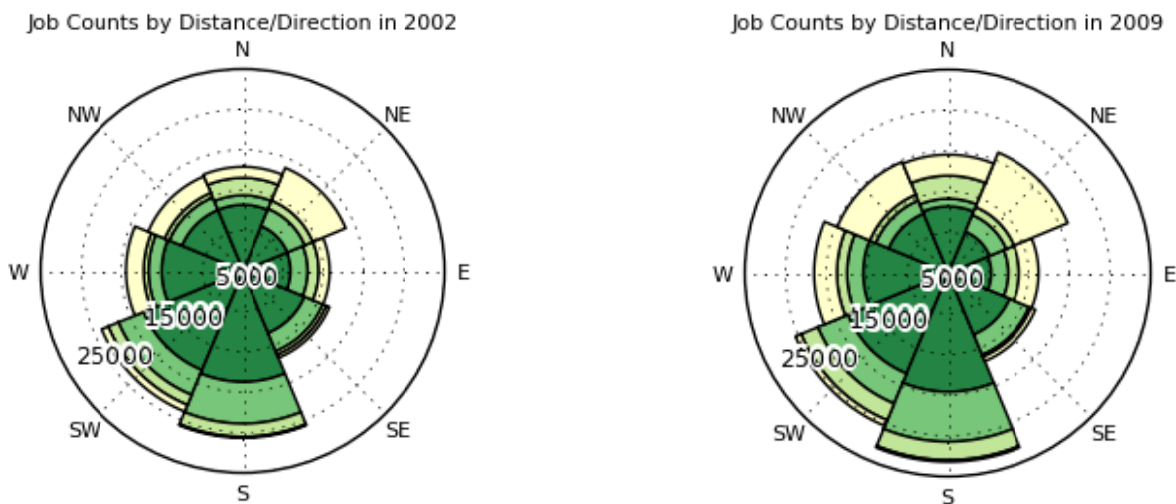
Top Counties Where Springfield Workers Resided in 2002		Top Counties Where Springfield Workers Resided in 2009	
Greene County	76,144	Greene County	74,918
Christian County	12,253	Christian County	15,026
Webster County	5,138	Webster County	5,333
Polk County	2,604	Polk County	2,709
Stone County	1,444	Lawrence County	2,550
Total Springfield Jobs	115,753	Total Springfield Jobs	128,333

Missouri’s third largest city with nearly a half a million people in its metro area is Springfield. Located in southwest Missouri, Springfield has close proximity to many tourist areas including Branson and Table Rock Lake, both located only 40 miles to the south. Springfield is also home to several colleges including Missouri State University. The city also has an airport that has serviced between eight and nine hundred thousand travelers four of the past five years.

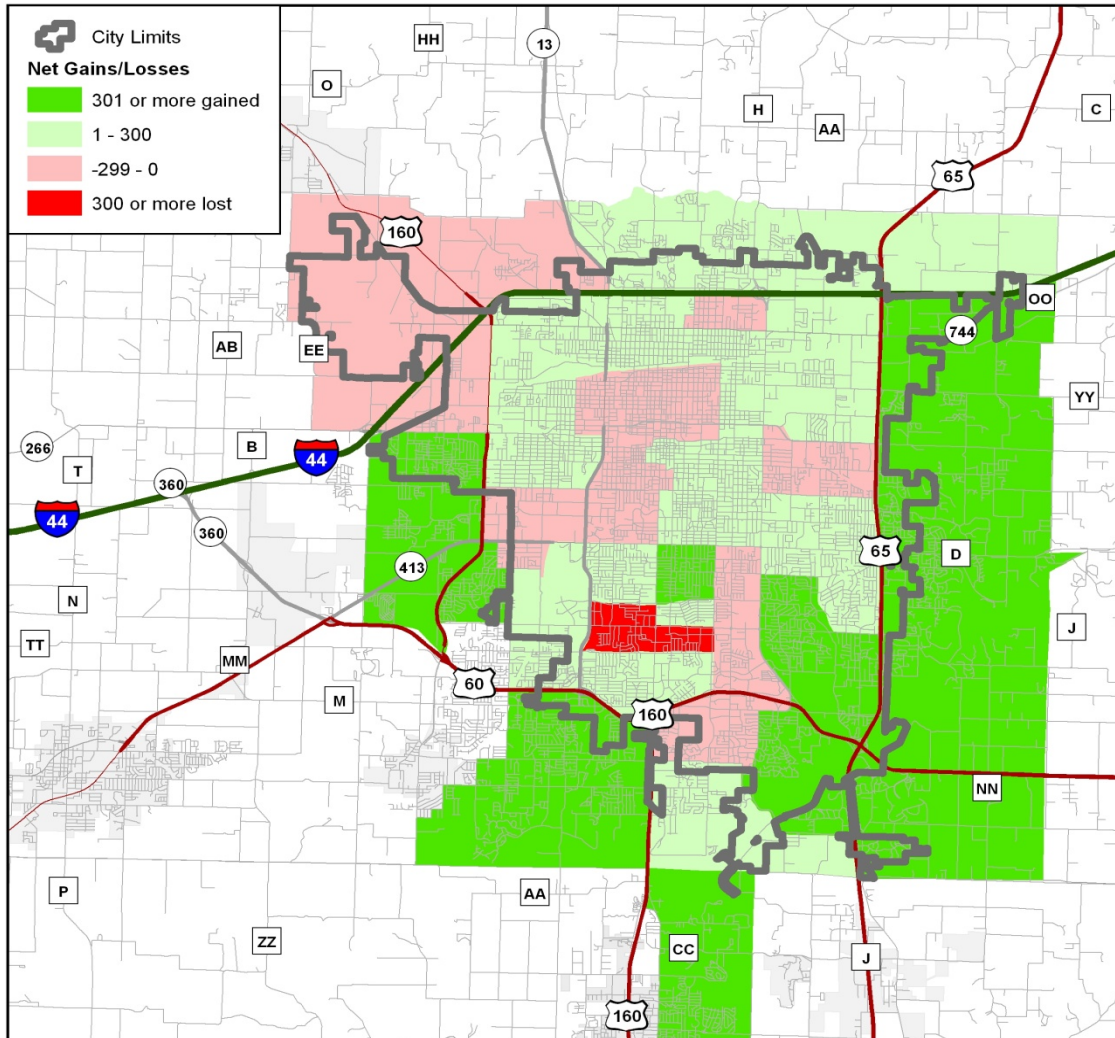
LED On-the-Map: Where Springfield Workers

Springfield’s job count grew by 11% between 2002 and 2009. Following the same trends as many of Missouri’s cities, fewer workers from Greene County, where Springfield is located, actually work within the city. However, Christian County, just south of Green County, increased its workforce to Springfield by 23%. Webster, Polk, and Lawrence Counties each increased their workforce to Springfield over the same timeframe also. Kansas City, MO has increased its workforce to Springfield by 65% over this span.

Distance and Direction Springfield Workers to Residence (dark green=10 miles or less, yellow=50+ miles)



LED On-the-Map: Springfield Area Job Trends 2002-2009



Growing & Shrinking Industries

Healthcare & Social Assistance is Springfield's top employing sector with over 25,000 workers. The *Goods Producing* sector lost 15% of its Springfield jobs during this span. In general, Greene County and most of its surrounding counties all had a decline in the number of residents employed in this trade in Springfield. The *Trade, Transport, & Utilities* sector lost 20% of its Springfield jobs during this span. Again, Greene County and most surrounding counties were home to fewer workers in this sector in Springfield in 2009 than in 2002.

