

# Northwest MO Hotspot – St. Joseph

Discovering Employment Trends with Local Employment Dynamics (LED)

St. Joseph is an economic and employment center for the Northwest Region WIA of Missouri. This report details the workers and industries that make this place a hotspot of economic activity.



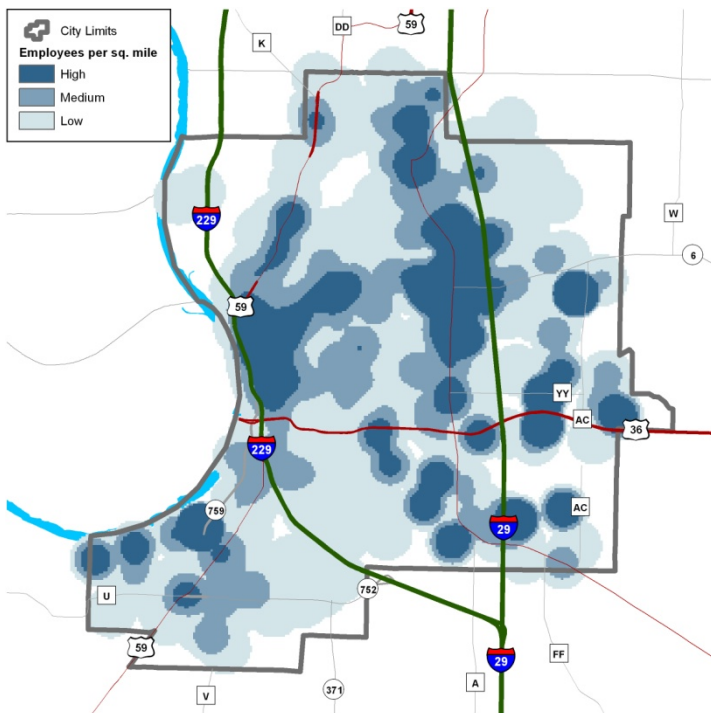
## St. Joseph Employment Hotspots

The largest concentrations of employment in the Northwest Region Workforce Investment Area are found in St. Joseph, Maryville, and Chillicothe. Workforce Investment Areas are the result of the federal Workforce Investment Act of 1998 (WIA) which funds a number of employment and training programs across the nation.

In 2009, 63.3% of all workers in the Northwest Region WIA were employed in St. Joseph, Maryville, and Chillicothe. This is up from 2002 when these three cities made up 60.2% of the region's employment. Other cities in the Northwest Region with over 1,800 workers or more include Trenton, Brookfield, Cameron, and Bethany.



## St. Joseph Census Overview



St. Joseph's 2009 population was 76,063 according to the US Census American Community Survey. This is up from the 2000 Census population of 73,829. According to the same Census survey, 84.6% of residents have attained high school graduation and 18.3% have at least a bachelors degree. Manufacturing and Healthcare & Social Assistance are the two top employing sectors in St. Joseph, together making up 39.1% of the 2009 workforce. This is up from 2002 when these two sectors made up 31.5% of the total jobs in St. Joseph.



## Where St. Joseph Workers Live?

The Local Employment Dynamics (LED) program is a partnership between the U.S. Census Bureau and the agencies in each state that generate and analyze labor market information. The LED Origin-Destination mapping tool allows you to designate either an area where workers work and determine where they live, or designate where residents live and determine where those workers commute.

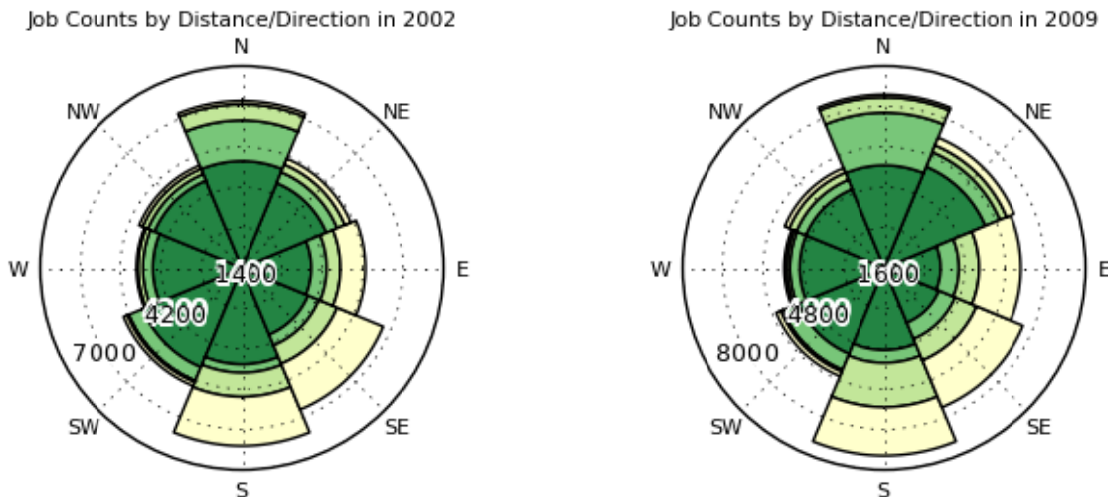
Top Counties Where St. Joseph Workers Resided in 2002		Top Counties Where St. Joseph Workers Resided in 2009	
Buchanan County	23,913	Buchanan County	25,451
Andrew County	2,799	Andrew County	4,327
Jackson County	1,647	Jackson County	1,747
Dekalb County	936	Dekalb County	1,174
Doniphan County, KS	1,184	Doniphan County, KS	1,134
<b>Total St. Joseph Jobs</b>	<b>37,593</b>	<b>Total St. Joseph Jobs</b>	<b>44,222</b>

St. Joseph is located about 60 miles north of Kansas City right on Interstate 29. St. Joseph's Missouri Western University plays host to the Kansas City Chiefs team training each summer. Also in St. Joseph is the Jesse James Museum, the historic Pony Express, and other festivals celebrating the city's rich Western heritage. St. Joseph is also a very strong manufacturing town, with nearly one quarter of its workforce involved in goods producing.

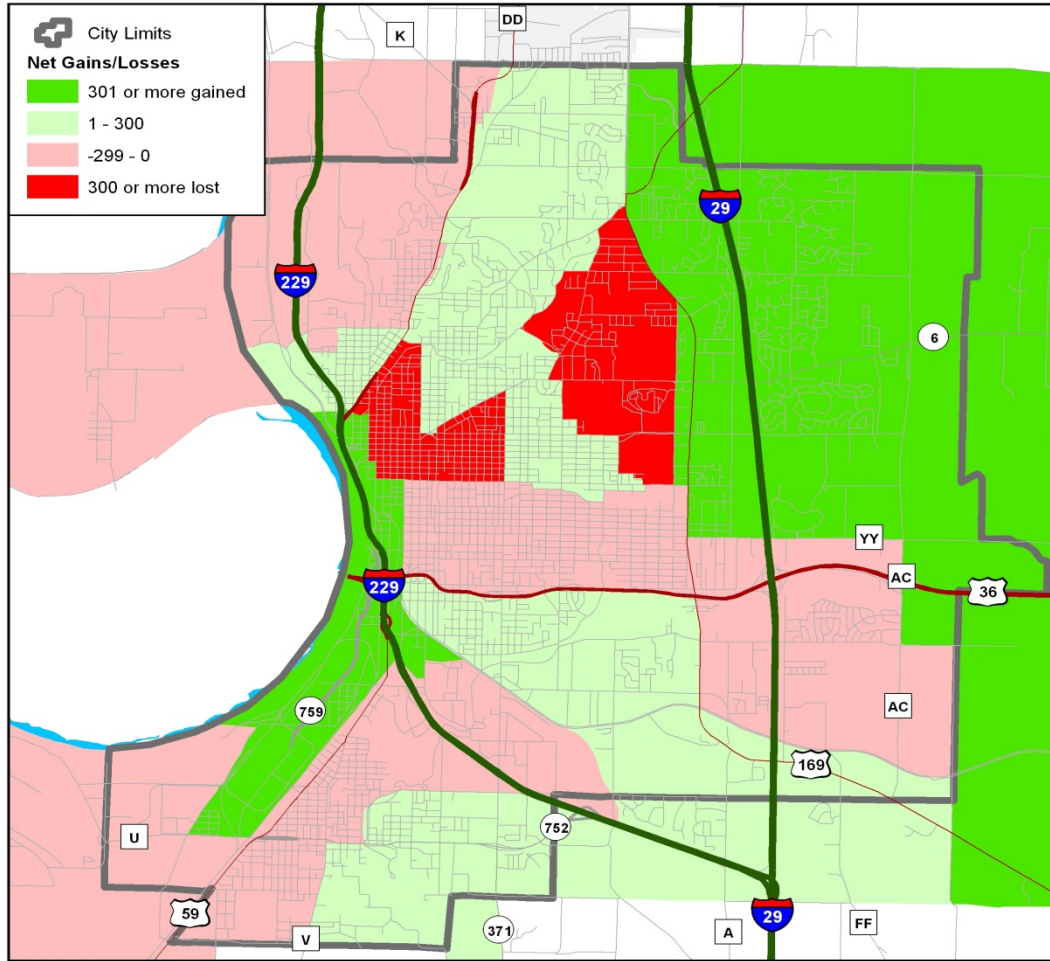
## LED On-the-Map: Where St. Joseph Workers Live

St. Joseph's job count increased by nearly 18% from 2002 through 2009. Defying the trend of most of Missouri's cities, workers from Buchanan County where St. Joseph is located actually increased by 6% during that span. The rest of the top 4 county locations of St. Joseph based workers all increased their workforce numbers during this span as well. The only county in the top 5 to decrease its St. Joseph based workforce was Doniphan County, KS. In 2009, nearly 1,400 St. Joseph workers came from Kansas City, MO.

**Distance & Direction St. Joseph Workers to Residence** (dark green=10 miles or less, yellow=50+miles)



## LED On-the-Map: St. Joseph Area Job Trends 2002-2009



### Growing & Shrinking Industries

Manufacturing is the top employing sector in St. Joseph with a workforce of 10,129 in 2009. The *Goods Producing* sector's workforce grew by 38% during this span. Buchanan County residents working in the St. Joseph *Goods Producing* sector alone grew 35%. Andrew County, just north of Buchanan County, increased its residents working in St. Joseph's *Goods Producing* sector by 38%. The *Trade, Transport, & Utilities* sector jobs grew 3% during this span, as well. There were 31% more workers traveling from Kansas City to St. Joseph in 2009 than in 2002.

