

# West Central Region Hotspot - Warrensburg

Discovering Employment Trends with Local Employment Dynamics (LED)

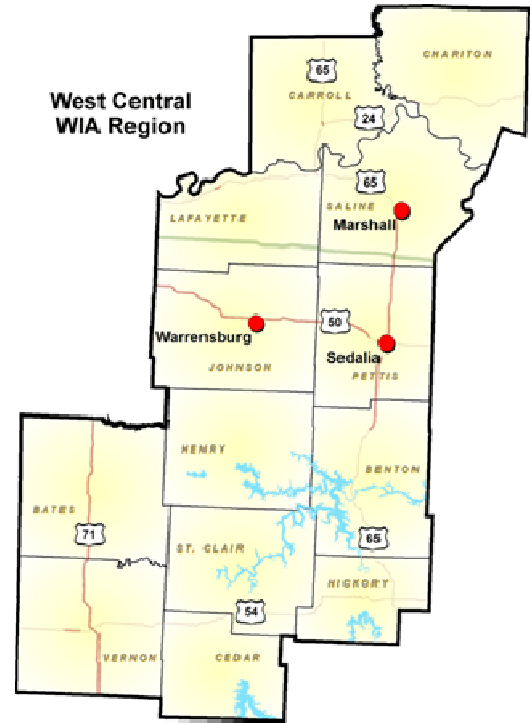
Warrensburg is an economic and employment center for the West Central region of Missouri. This report details the workers and industries that make this place a hotspot of economic activity.



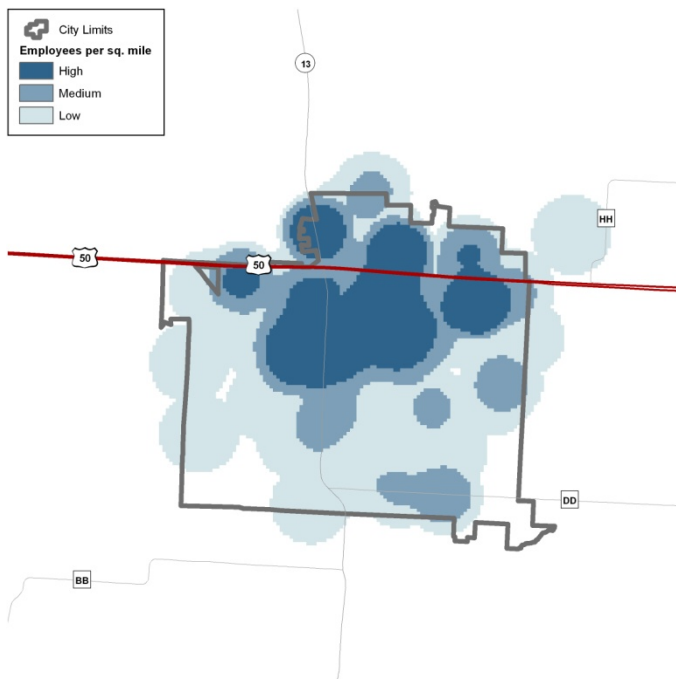
## West Central Employment Hotspots

The largest concentrations of employment in the West Central Workforce Investment Area are found in the cities of Sedalia, Marshall, and Warrensburg. Workforce Investment Areas are the result of the federal Workforce Investment Act of 1998 (WIA) which funds a number of employment and training programs across the nation.

In 2009, 35% of all workers in the West Central region were employed in the cities of Sedalia (16.1%), Marshall (9.5%), and Warrensburg (9.2%). This is nearly identical to 2002 levels which showed the same three cities holding 35.4%. Other cities in the West Central WIA with 2,000 or more jobs are Nevada, Clinton, Butler, and Higginsville.



## Warrensburg Census Overview



Warrensburg's 2009 population estimate from the US Census American Community Survey was 18,606 with a median age of 23.4. This is up slightly from the 2000 Census population of 16,424. According to the same Census survey, 89.7% of residents have attained high school graduation. Healthcare & Social Assistance and Retail Trade are the two top employing sectors in Warrensburg, making up 29.2% of the workforce. This is down from 2002 when these two sectors made up 33.5% of the total jobs in Warrensburg.



## *LED On-the-Map: Where Warrensburg Workers Live*

The Local Employment Dynamics (LED) program is a partnership between the U.S. Census Bureau and the agencies in each state that generate and analyze labor market information. The LED Origin-Destination mapping tool allows you to designate either an area where workers work and determine where they live, or designate where residents live and determine where those workers commute.

Top Counties Where Warrensburg Workers Resided in 2002		Top Counties Where Warrensburg Workers Resided in 2009	
Johnson County	4,246	Johnson County	4,079
Jackson County	569	Jackson County	521
Henry County	305	Pettis County	306
Lafayette County	285	Lafayette County	265
Pettis County	262	Henry County	240
<b>Total Warrensburg Jobs</b>	<b>6,981</b>	<b>Total Warrensburg Jobs</b>	<b>6,984</b>

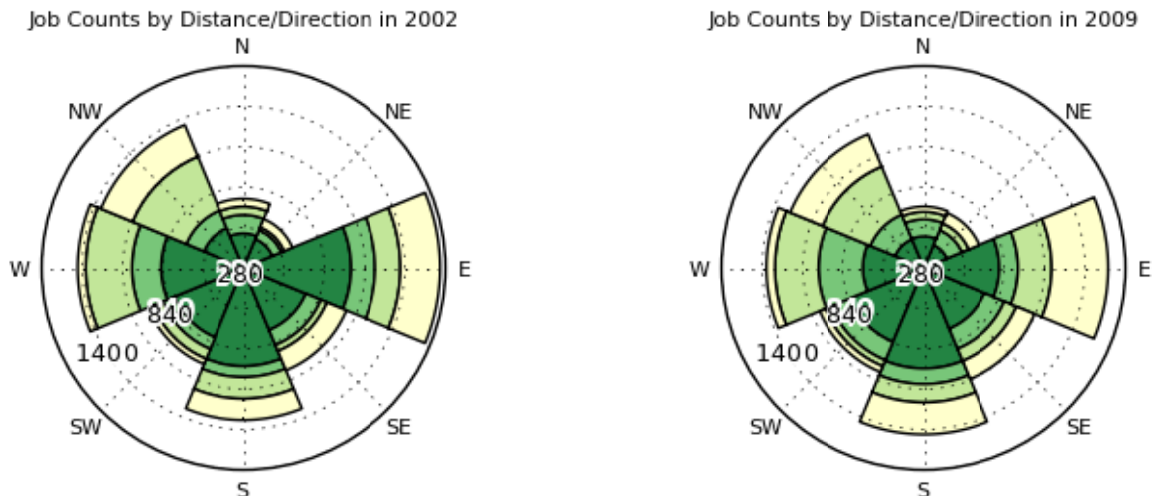
### Home to Central Missouri State University

Warrensburg is home to Central Missouri State University, an attraction for students from all over the country and many from outside the United States. Over 10,000 students attend college in Warrensburg, which bills itself as “delivering a world-class education by providing a small-college learning environment coupled with large-university opportunities.” Also calling Warrensburg home is Whitman Air Force Base which operates and maintains the Air Force’s B-2 bomber.

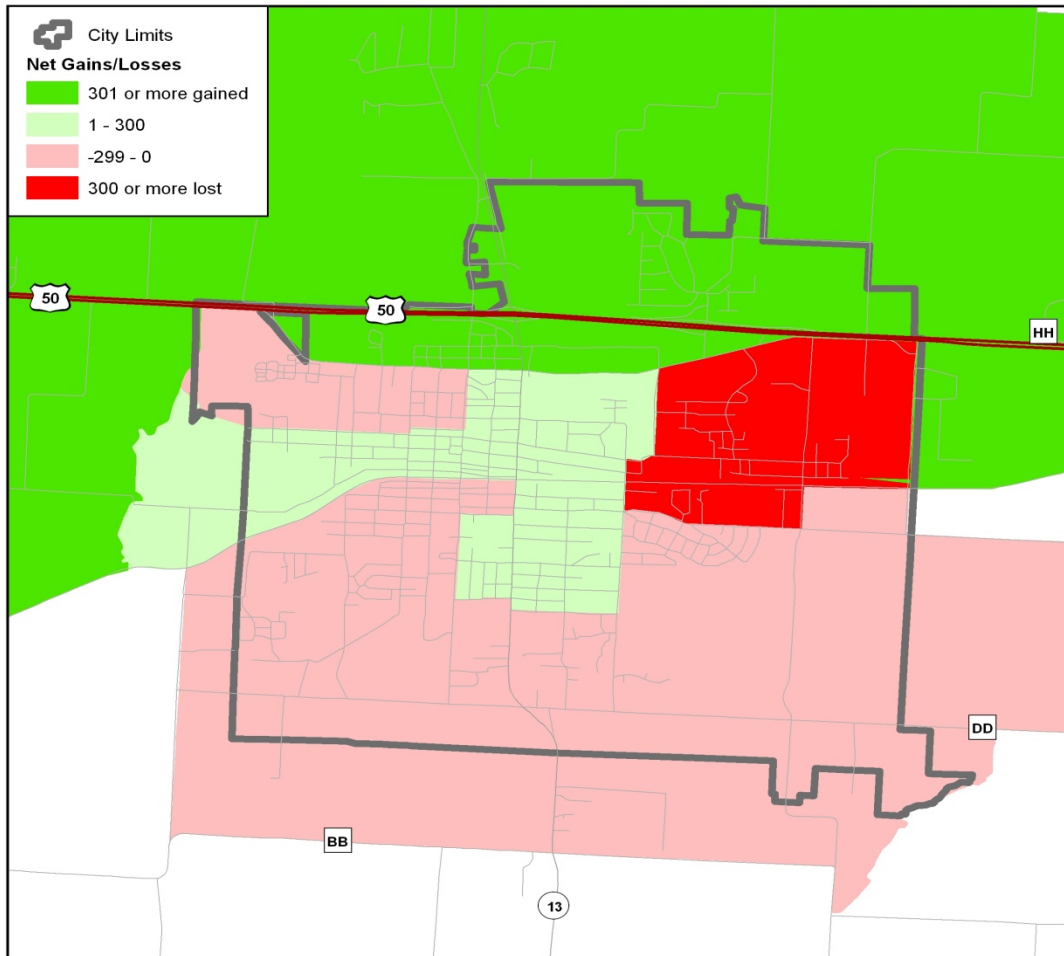
## *LED On-the-Map: Where Warrensburg Workers Live*

Warrensburg’s job count remained almost identical in 2009 as compared to 2002. Following the same trends as many of Missouri’s cities, workers in Johnson County where Warrensburg is located actually declined in number during this time timeframe while certain surrounding counties, especially Pettis County, increased its workforce in Warrensburg. In both 2002 and 2009 Warrensburg brought in over 500 workers alone from Jackson County, part of the Kansas City metropolitan area.

### Distance & Direction Warrensburg Workers to Residence (dark green=10 miles or less, yellow=50+ miles)



## LED On-the-Map: Warrensburg Area Job Trends 2002-2009



### Growing & Shrinking Industries

Warrensburg's top employing sector making up 14.7% of the workforce in 2009 was Healthcare & Social Assistance. The *Goods Producing* sector lost 18% of its jobs during this span, with Johnson and most surrounding counties sharing in the loss proportionally. The *Trade, Transport, & Utilities* sector jobs in Warrensburg grew 13% over this timeframe. Johnson and most of the immediate surrounding counties saw relatively little overall change in their residents working in this sector in Warrensburg. Most of the gain came from workers from further away such as St. Louis and St. Charles Counties.

