

South Central MO Hotspot – West Plains

Discovering Employment Trends with Local Employment Dynamics (LED)

West Plains is an economic and employment center for the Southeast region of Missouri. This report details the workers and industries that make this place a hotspot of economic activity.

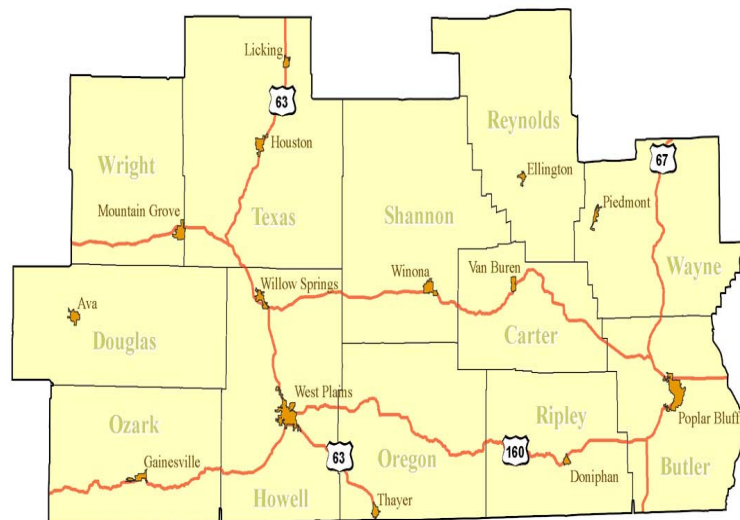


South Central Employment

Poplar Bluff, West Plains, and Doniphan form the largest concentrations of employment in the South Central Workforce Investment Area. Many workers in the region also work in Springfield in the neighboring Ozark Workforce Investment Area. Workforce Investment Areas are the result of the federal Workforce Investment Act of 1998 (WIA) which funds a number of employment and training programs across the nation.

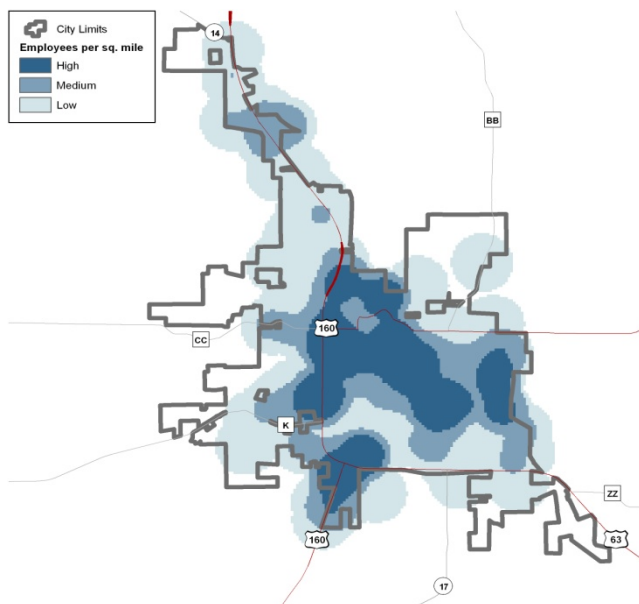
In 2009, 44.8% of all workers in the South Central region were employed in the cities Poplar Bluff (24.3%), West Plains (16.4%), and Doniphan (4.1%), which is down slightly from 2002 when the percentage was at 47.7%. Other cities in the South Central WIA with 1,200 or more jobs are Houston, Mountain Grove, Cabool, and Piedmont.

South Central WIA Region



West Plains Census Overview

West Plains had a 2009 population estimate of 11,660 from the US Census American Community Survey with a median age of 37.6. This is up from the 2000 Census population of 10,739. Approximately 84.5% of residents are high school graduates. Health & Social Services and Manufacturing are the top two employing sectors in West Plains, together employing approximately 39.1% of the city's jobs. This is down from 2002 when those sectors employed 44.6% of the city's jobs.



Where do West Plains Workers Live?

The Local Employment Dynamics (LED) program is a partnership between the U.S. Census Bureau and the agencies in each state that generate and analyze labor market information. The LED Origin-Destination mapping tool allows you to designate either an area where workers work and determine where they live, or designate where residents live and determine where those workers commute.

Top Counties Where West Plains Workers Resided in 2002		Top Counties Where West Plains Workers Resided in 2009	
Howell County	7,280	Howell County	6,100
Oregon County	673	Oregon County	531
Fulton County, AR	185	Texas County	196
Ozark County	141	Fulton County, AR	147
Douglas County	122	Greene County	146
Total West Plains Jobs	9,562	Total West Plains Jobs	8,661

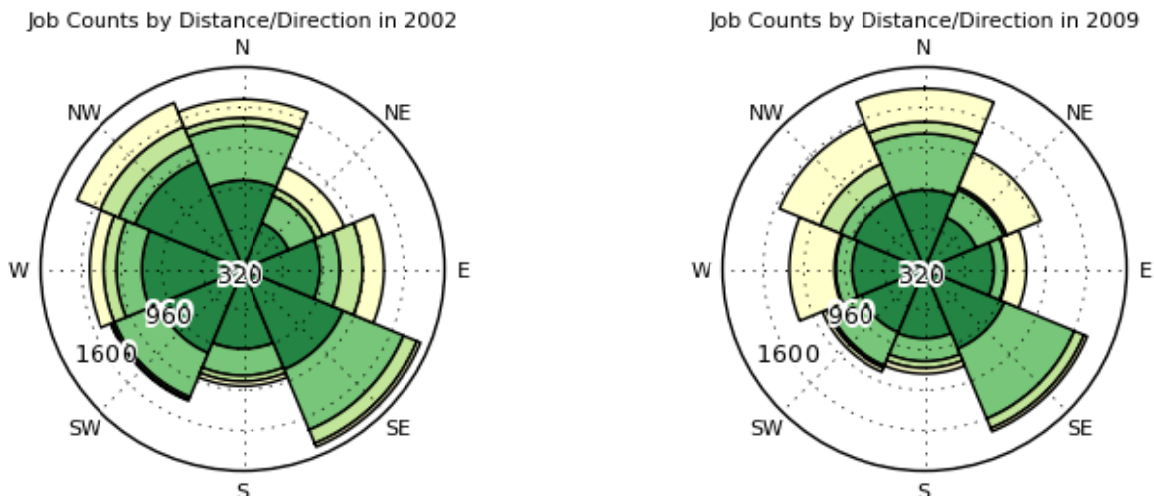
“Ozark Heritage Region”

Located in the heart of the Ozarks in South Central Missouri, West Plains is surrounded by countless lakes, springs, and parks including Bull Shoals Reservoir and Norfolk Lakes near the Arkansas border. West Plains is also easily accessible to Highway 63, which spans Missouri from north to south. Weekly events also occur at the popular West Plains Civic Center Mezzanine

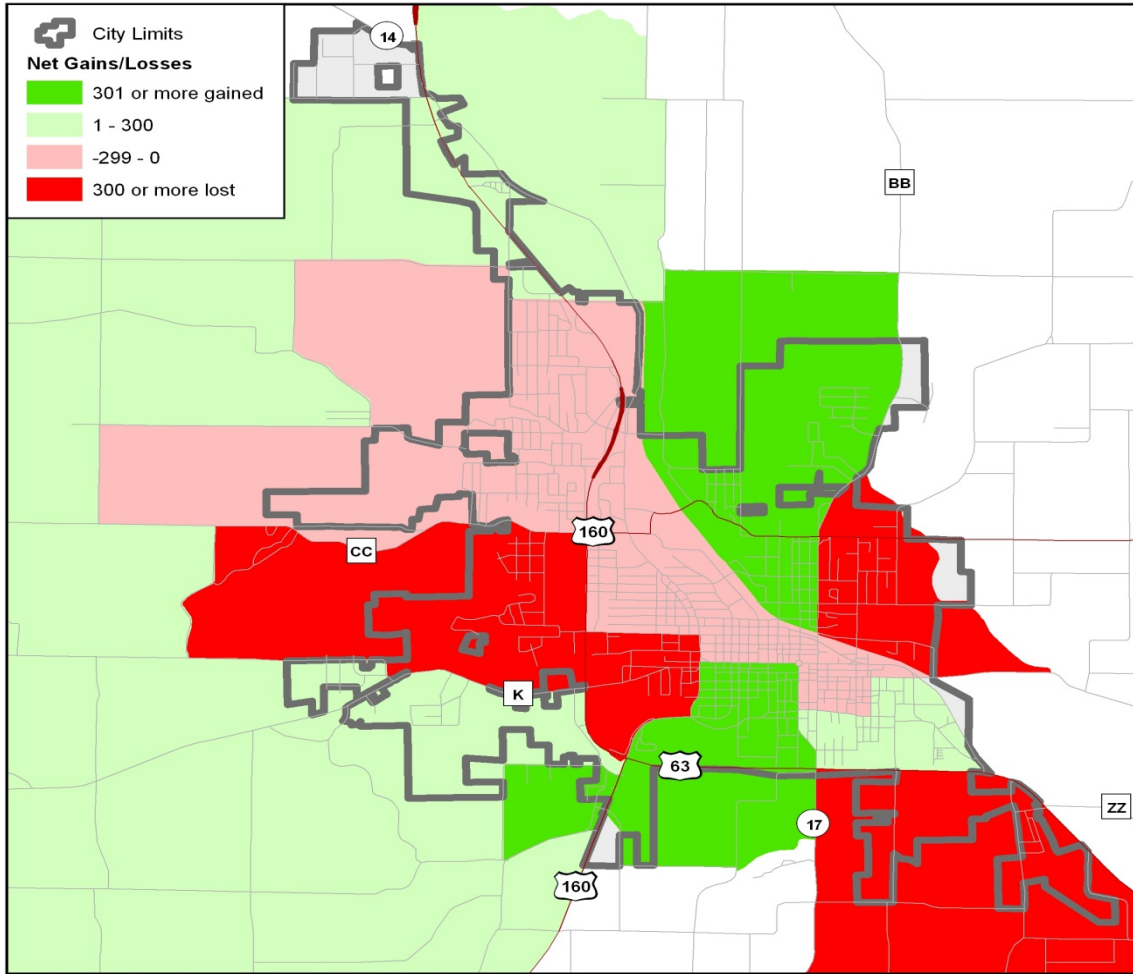
LED On-the-Map: Where West Plains Workers Live

West Plains’ job count declined 9.4% from 2002 through 2009. With the number of jobs declining and more people traveling further to work, there were 16% fewer Howell County residents working in West Plains. Oregon County decreased its West Plains workforce by 142 jobs. There was an increasing trend, however, in residents from other counties traveling to West Plains for work.

Distance & Direction West Plains Workers to Residence (dark green=10 miles or less, yellow=50+ miles)



LED On-the-Map: West Plains Area Job Trends 2002-2009



Growing & Shrinking Industries

Healthcare & Social Assistance is the top employing sector in West Plains with 24.8% of the workforce followed by Manufacturing with 14.3%. The *Goods Producing* sector lost 32% of its jobs over this timeframe from 2002 through 2009. There were 42% fewer Howell County residents working in this sector in West Plains in 2009 than in 2002. The *Trade, Transport, and Utilities* sector lost only 10% of its jobs during this span which is more in line with the overall trend of West Plains. The number of workers who live in Howell County and work in this sector declined by 27%

